


APS-12 | In-pavement approach side-row light - Airsafe



COMPLIANCE:



- ICAO Annex.14 Vol.1
- FAA AC 150/5345-46
- IEC-TS 61827
- EASA: CS-ADR-DSN
- STANAG 3316
- AENA PPT-010_03-12



BOARDING TIME

BOARDING PASS

NAME OF PASSANGER	
FROM:	TO:
DATE	FLIGHT GAES2020
GATE 23	SEAT 21B

 GOMINTEC
BOARDING PASS
 GOMINTEC

Uses

In-pavement approach side-row light for airports CAT I, II y III, according to ICAO, Figure A2-2.

Features

- 12" external diameter.
- Body casting manufactured on forged aluminum, with high strength and optimum mechanical performance.
- A patented prism design to guarantee an excellent optical performance and ensures high resistance to temperature and pressure changes.
- The upper cover is designed with a flat surface at the light beam exits to prevent the accumulation of water and ensure high luminous efficiency.
- Bulb fixing design based on suspension mounting to effectively extend bulb's lifetime
- Use of standard halogen reflector lamps.
- No adjustments required after lamp or another optical component replacement.
- High precision machining of parts and components to guarantee the quality and dimensions of each piece.
- Stainless steel hardware to grant the waterproof and corrosion resistance.
- Multi-slip waterproof gasket to ensure an appropriate seal with the base.
- Interchangeable components, usable in all lights of the range.

Specifications

- Power: 2.8A ~ 6.6 A.
- Lamp: 3x105W /6.6A Halogen lamp with reflector
- Lamp average life: More than 1.500h at maximum brightness and more than 3.000h in a normal operation conditions.
- Color: Red
- Index Protection: IP68.

APS-12 | In-pavement approach side-row light - Airsafe

Order Code

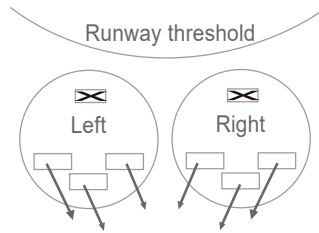
APS-12 - X - 315 - R

Type *APS-12 = 12" In-pavement approach side-row lights*

Beam direction *L = Left toe-in
R = Right toe-in*

Power *315 = 3 x 105W*

Beam color *R = Red*



Installation

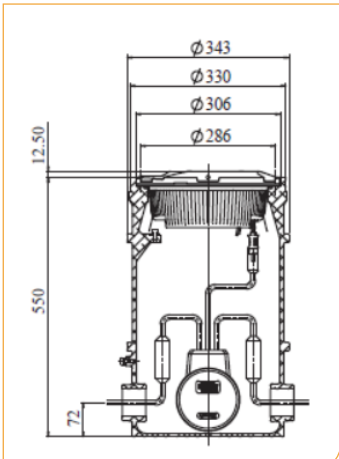


Figure 1
On 12" deep base

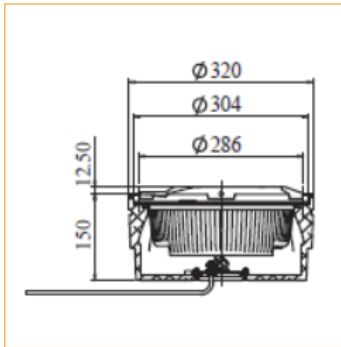
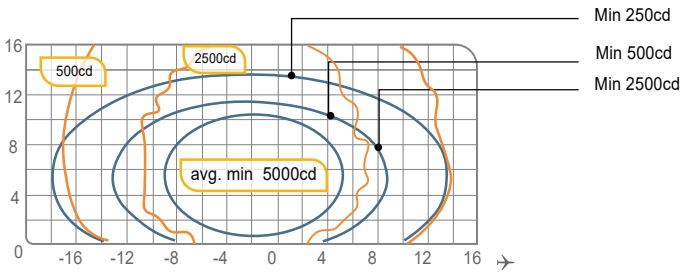


Figure 2
On 12" shallow base

APS-12 | In-pavement approach side-row light - Airsafe

Photometry

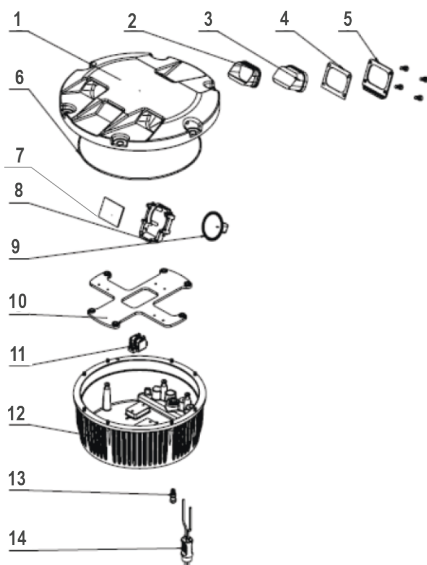


APS-12, ICAO Fig. A2-2, Red

Application		Main beam		Color	Required min. avg. cd.	Actual avg. cd.
		H	V			
APS-12	ICAO Fig A2-2 (toe-in 2°)	±7°	0,5° a 11,5°	Red	5.000	6.262
		±7°	1° a 11°	Red	5.000	6.156
		±7°	1,5° a 12,5°	Red	5.000	6.089



Structure



- 1 Upper cover
- 2 Prism gasket sleeve
- 3 Prism
- 4 Prism gasket
- 5 Prism pressing gasket
- 6 Light body gasket
- 7 Filter
- 8 Lampholder
- 9 Lamp
- 10 Mounting plate
- 11 Terminal block
- 12 Inner cover
- 13 Valve
- 14 Plug

APS-12 | In-pavement approach side-row light - Airsafe

Spare Parts

N°	Order No.	Description
2	43107	Prism gasket sleeve
3	31141	Prism
4	43307	Prism gasket
5	43208	Prism pressing bracket
6	41135	Light body gasket
7	31316-R	Filter
8	942133	Lamp holder
9	L64339	Lamp
11	941201	Terminal block
13	941801	Valve
14	HT70603	Plug

Accessories

N°	Order No.	Description
1	SB-12	12" shallow base
2	DB-12	12" deep base
3	41115	12" base o-ring gasket
4	51121	12" Lamp holder
5	ITF-300-066	300W Isolation transformer
6	REC7	Secondary cable receptacle style 7

Weight and Dimensions

	Base	12" shallow base
Packaging size	330x330x150mm ³	340x340x190mm ³
Weight	7,3 kg	11,8 kg