

SFLS-LED | LED sequenced flashing lighting system - Airsafe



COMPLIANCE:

- ICAO Annex. 14, Vol.I
- FAA AC 150/5345-51B
- FAA E-2628B
- IEC 61827
- EASA: CS-ADR-DSN.
- STANAG 3316

BOARDING TIME

BOARDING PASS

NAME OF PASSANGER

FROM:

TO:

DATE: FLIGHT
GAES2020

GATE: SEAT
23 21B

GATE CLOSSES 30 MINUTES BEFORE DEPARTURE

BOARDING PASS

Uses

LED approach sequenced flashing lighting system for airports CAT I, II & III according FAA E-2628B and ICAO annex 14 Vol.I.

Features

- Unit control is integrated into light, wich has compact structure.
- Main body of the lighting fixtures is made of aluminium alloy material with anti-corrosion surface treatment and all fasteners are made of stainless steel.
- The main control cabinet and all unit cabinets have CPU, wich works independently and collaborative cooperation is achieved through the BUS communication.
- LED flash has low power consumption and high power factor.
- An eventual failure will not result in breakdown of system, ensuring reliable system operation.
- Monitoring system achieves remote control and uploads of operation status.
- Circuits, power and communication cables are equipped with lightning protection, conforming FAA requirements.
- Elevated lights for mounting on 1" or 2" frangible tube.
- Precision machined on fixing elements to meet ICAO and FAA frangibility requirements.
- Photometry and chromaticity according to requirements of sequenced flashing systems of the FAA E-2628.

Specifications

- Power: 230V-50Hz / 400V-50Hz
- Color: White
- Consumption: Elevated unit 44VA / Inset unit 72VA
- Index Protection: IP67.

SFLS-LED | LED sequenced flashing lighting system - Airsafe

		Order Code					
		SFLS-LED	- X-1	- X-2	- X-3	- X-4	- X5
Type	SFLS-LED: LED Sequenced flashing lighting system	↑					
Power	1P = Single-phase power supply	↑					
elevated light / insert light	02/05: 2 elevated light / 5 insert light 19/02: 19 elevated light / 2 insert light 30/00: 30 elevated light / 0 insert light	↑					
Communication Mode	CAN = CAN communication (with main control cabinet)	↑					
Flashing Frequency	01: 1Hz 02: 2Hz	↑					
Optional Function	B: including with wiring box	↑					

Installation

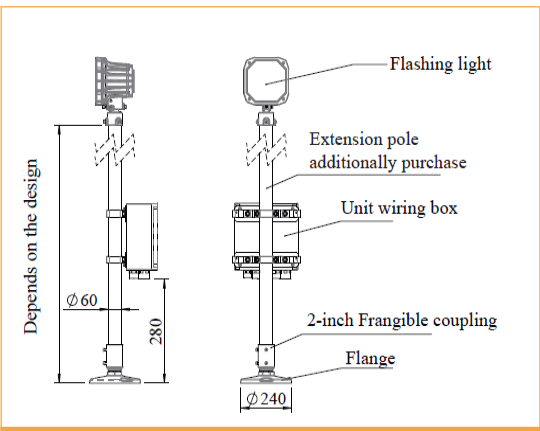


Figure 1
Elevated flashing light with upright pole installation Unit wiring box with backpack type installation

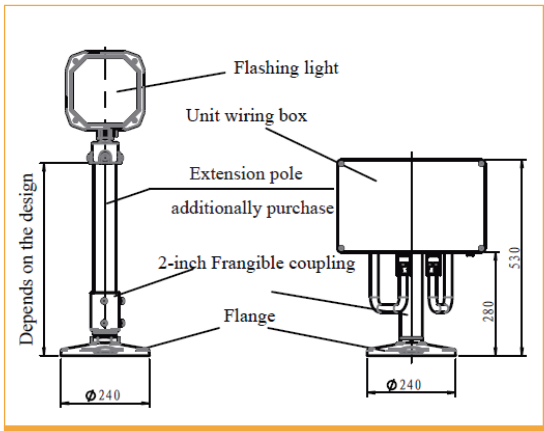
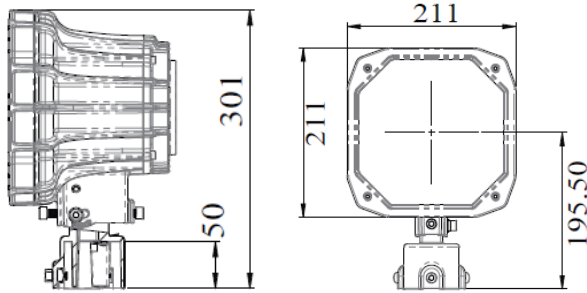


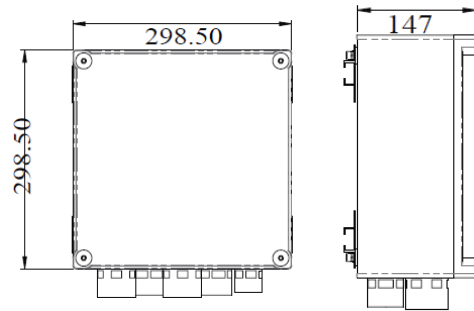
Figure 2
Elevated flash light upright pole installation Unit wiring box with supporting pole installation



Dimensions



Dimension of Elevated Flashing light



Dimension of the unit wiring box

Photometry

Elevated flashing light

Unit power	44VA
Beam angle	Horizontal $\pm 15^\circ$, Vertical 0-10°
Light intensity	I class 2% (150 - 450cd)
	II class 10% (750 - 2250cd)
	III class 100% (7500 - 22500cd)
Flash frequency	Once or twice pro second, adjustable
Elevation angle	0 to 15 degrees vertical

SFLS-LED | LED sequenced flashing lighting system - Airsafe

Spare Parts

COMPONENT ORDER

N°	Order No.	Description
1	979302	Main control cabinet
2	66280	Elevated flashing light
3	79308-D	Unit wiring box
4	924252	Frangible coupling joint
5	FL-10	Flange

SPARE ARTICLES ORDER

N°	Order No.	Description
1	66110	Main control cabinet panel assembly
2	41186	Optical cover gasket
	979248	LED assembly
	31159	Optical cover
	41188	Light body gasket
	924D11	Rear cover assembly

Accessories

N°	Order No.	Description
1	54220	Calibrator assembly

Weight & Dimensions

Packaging	Dimensions	Weight
1 x Main control cabinet	550 x 550 x 1400mm ³	55kg
1 x Elevated flashing light	262x 302 x 380mm ³	6,5kg
1 x Unit wiring box	440 x 350 x 550mm ³	9,5kg
1 x Flange	240 x 240 x 180mm ³	8,4kg
6 x Frangible coupling joint	340 x 340 x 190mm ³	12,3kg