

**RTIL-LED | LED runway threshold identification light - Airsafe**



### COMPLIANCE:

- ICAO Annex. 14, Vol.I
- FAA AC 150/5345-51
- IEC: 61827
- EASA: CS-ADR-DSN
- STANAG 3316
- FAA E-2628B



BOARDING TIME

**BOARDING PASS**

NAME OF PASSANGER

FROM:

TO:

DATE:                      FLIGHT  
                                    GAES2020

GATE:                      SEAT  
23                              21B

GATE CLOSSES 30 MINUTES BEFORE DEPARTURE

BOARDING PASS

**Uses**

LED Runway threshold identification lights for airports CAT I, II & III according FAA E-2628B and ICAO annex 14 Vol.I.

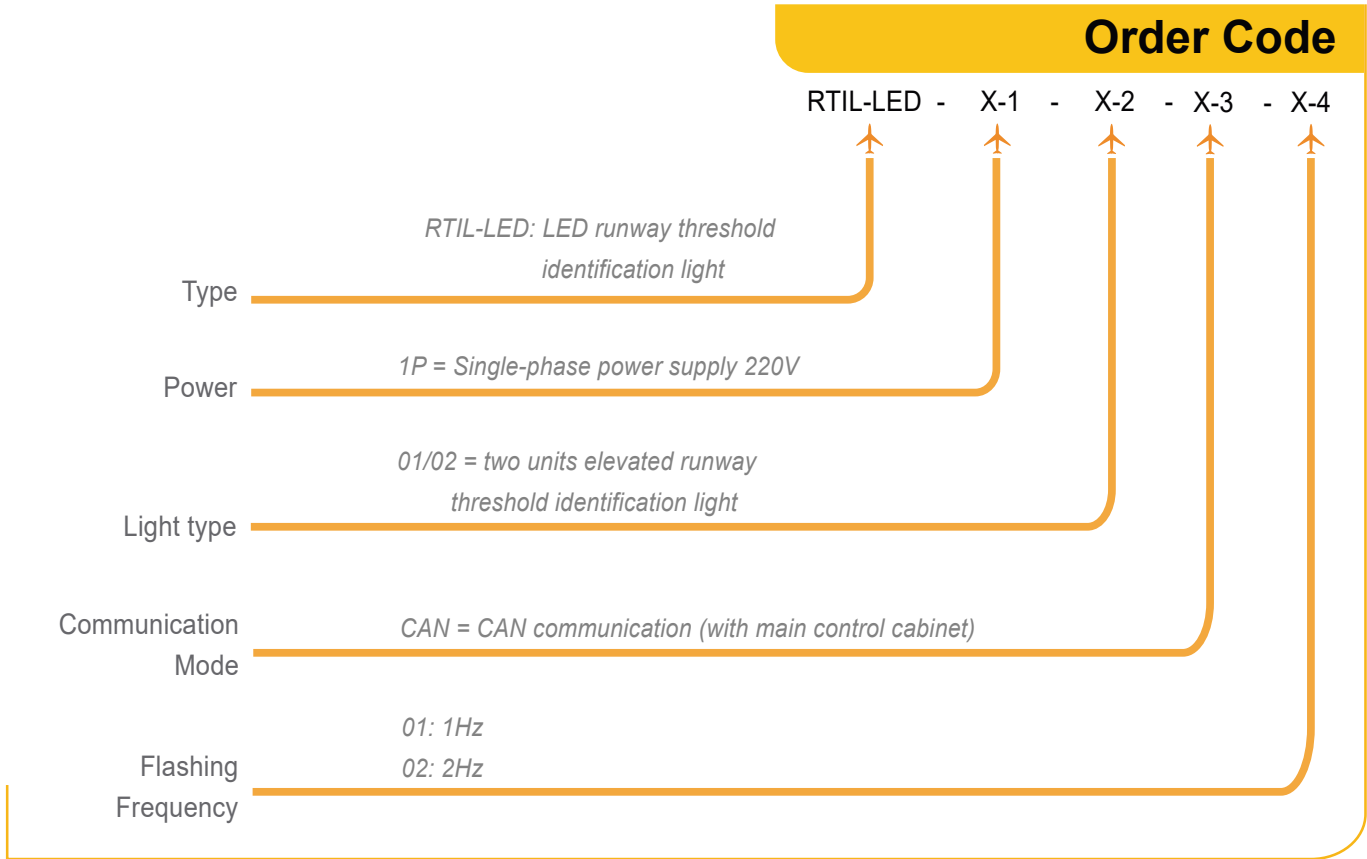
**Features**

- Unit control is integrated into light, which has compact structure.
- Main body of the lighting fixtures is made of aluminium alloy material with anti-corrosion surface treatment and all fasteners are made of stainless steel.
- The main control cabinet and all unit cabinets have CPU, which works independently and collaborative cooperation is achieved through the BUS communication.
- LED flash has low power consumption and high power factor.
- An eventual failure will not result in breakdown of system, ensuring reliable system operation.
- Monitoring system achieves remote control and uploads of operation status.
- Circuits, power and communication cables are equipped with lightning protection, conforming FAA requirements.
- Elevated lights for mounting on 1" or 2" frangible tube.
- Precision machined on fixing elements to meet ICAO and FAA frangibility requirements.
- Photometry and chromaticity according to requirements of sequenced flashing systems of the FAA E-2628.

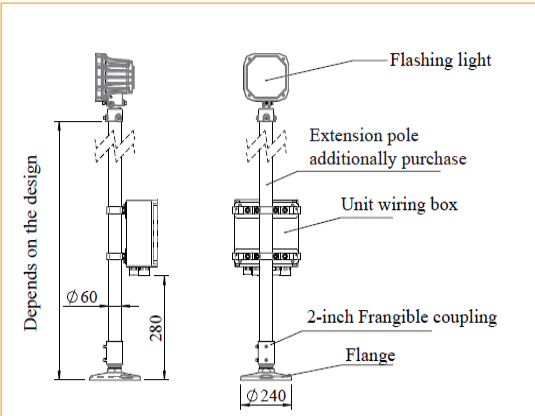
**Specifications**

- Power: 230V ~ 50Hz
- Color: White
- Consumption: Elevated unit 44VA / Inset unit 72VA
- Index Protection: IP67.

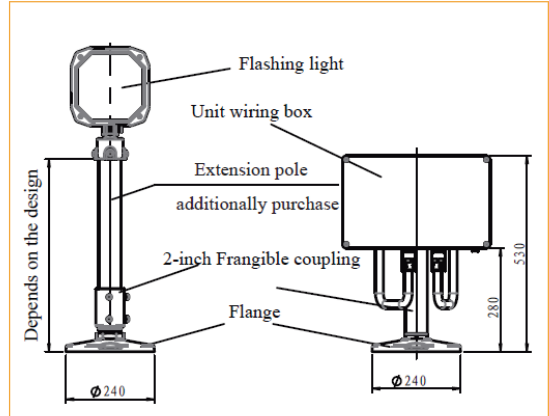
**RTIL-LED | LED runway threshold identification light - Airsafe**



**Installation**



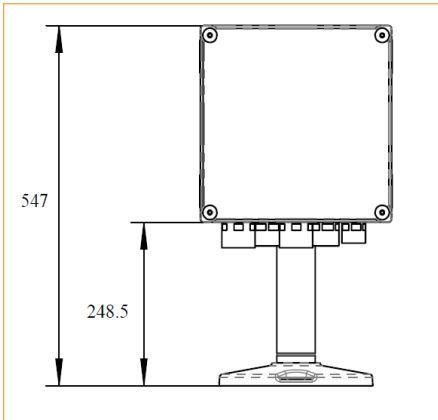
**Figure 1**  
Elevated flashing light with upright pole installation Unit wiring box with backpack type installation



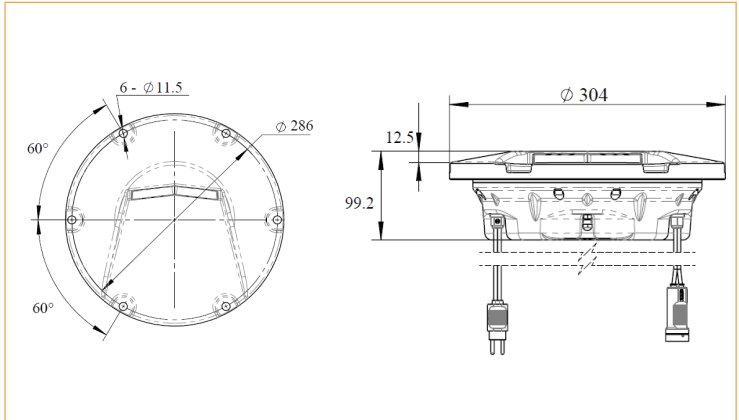
**Figure 2**  
Elevated flash light upright pole installation Unit wiring box with supporting pole installation

**RTIL-LED** | LED runway threshold identification light - Airsafe

**Installation**

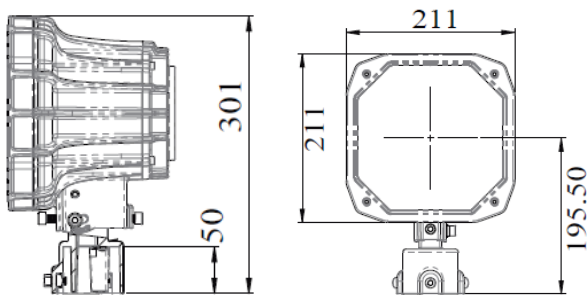


**Figure 3**  
*Installation of unit wiring box*

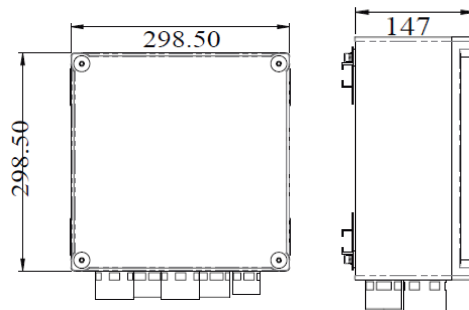


**Figure 4**  
*Installation of in-pavement flasher*

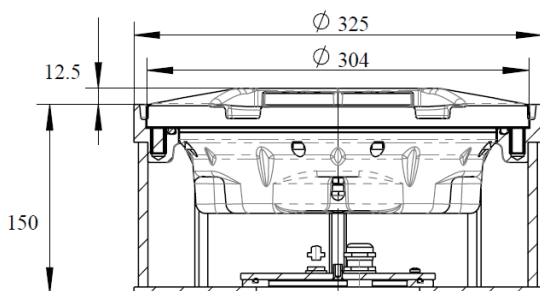
**Dimensions**



**Dimension of Elevated Flashing light**



**Dimension of the unit wiring box**



**Dimension of the in-pavement flasher**

**RTIL-LED** | LED runway threshold identification light - Airsafe

**Technical Parameters**

**Elevated runway threshold identification light**

Unit power	44VA
Beam angle	Horizontal $\pm 15^\circ$ , Vertical 0-10°
Light intensity	I class 2% (150 - 450cd)
	II class 10% (750 - 2250cd)
	III class 100% (7500 - 22500cd)
Flash frequency	Once or twice pro second, adjustable
Elevation angle	0 to 15 degrees vertical

**In-pavement runway threshold identification light**

Unit power	72VA
Beam angle	Horizontal $\pm 15^\circ$ , Vertical 2-12°
Light intensity	I class 2% (150 - 450cd)
	II class 10% (750 - 2250cd)
	III class 100% (7500 - 22500cd)
Flash frequency	Once or twice pro second, adjustable

**Spare Parts**

COMPONENT ORDER

N°	Order No.	Description
1	979302	Main control cabinet
2	66280	Elevated flashing light
3	79308-D	Unit wiring box
4	924252	Frangible coupling joint
5	FL-10	Flange
6	66440	In-pavement flasher
7	SB-12	Shallow Base

## RTIL-LED | LED runway threshold identification light - Airsafe

### Spare Parts

#### SPARE ARTICLES ORDER

N°	Order No.	Description
Main control cabinet	791A7	Main control screen
Elevated flashing light	41186	Optical cover gasket
	979248	LED assembly
	31159	Optical cover
	41188	Light body gasket
	924D11	Rear cover assembly
In-pavement flashing light	7927D	LED Assembly
	43112	Prism gasket sleeve
	31162	Prism - ISFL glass - right
	31161	Prism - ISFL glass - left
	41135	Light body gasket
	43315	Prism gasket
	4642K	Prism pressing bracket
Base	41115	Gasket

### Accessories

N°	Order No.	Description
1	54220	Calibrator assembly

### Weight & Dimensions

Packaging	Dimensions	Weight
1 x Main control cabinet	550 x 550 x 1400mm <sup>3</sup>	55kg
1 x Elevated flashing light	262x 302 x 380mm <sup>3</sup>	6,5kg
1 x Unit wiring box	440 x 350 x 550mm <sup>3</sup>	9,5kg
6 x Flange	240 x 240 x 180mm <sup>3</sup>	8,4kg
16 x Frangible coupling joint	340 x 340 x 190mm <sup>3</sup>	12,3kg
1 x In-pavement flashing light	310 x 310 x 150mm <sup>3</sup>	8,6kg
1 x Shallow Base	340 x 340 x 185mm <sup>3</sup>	4,5kg