


RCL-08 | In-pavement runway centerline light - Airsafe



COMPLIANCE:

- ICAO Annex.14 Vol.1
- FAA AC 150/5345-46
- IEC-TS 61827
- EASA: CS-ADR-DSN
- STANAG 3316
- AENA PPT-013_03-12



BOARDING TIME

BOARDING PASS

NAME OF PASSANGER

FROM:

TO:

DATE

FLIGHT
GAES2020

GATE 23 SEAT 21B

GOMINTEC
BOARDING PASS
GOMINTEC

Uses

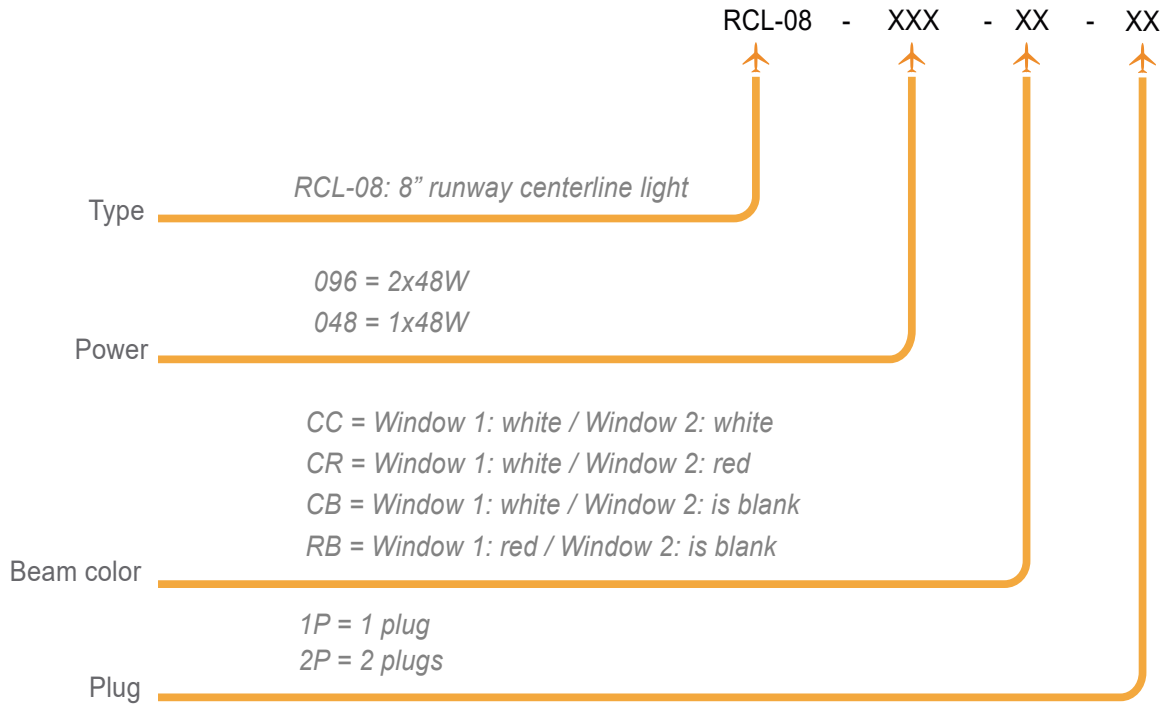
In-pavement runway centerline light for airports CAT I, II y III, according to a ICAO, Figures A2-6 & A2-7.

- ## Features
- 8" external diameter.
 - Body casting manufactured on forged aluminum, with high strength and optimum mechanical performance.
 - A patented prism design to guarantee an excellent optical performance and ensures high resistance to temperature and pressure changes.
 - The upper cover is designed with a flat surface at the light beam exits to prevent the accumulation of water and ensure high luminous efficiency.
 - Bulb fixing design based on suspension mounting to effectively extend bulb's lifetime
 - Use of standard halogen reflector lamps.
 - No adjustments required after lamp or another optical component replacement.
 - High precision machining of parts and components to guarantee the quality and dimensions of each piece.
 - Stainless steel hardware to grant the waterproof and corrosion resistance.
 - Multi-slip waterproof gasket to ensure an appropriate seal with the base.
 - Interchangeable components, usable in all lights of the range.

- ## Specifications
- Power: 2.8A ~ 6.6 A.
 - Lamp: 2x48W /6.6A halogen lamp with reflector
 - Lamp average life: More than 1.500h at maximum brightness and more than 3.000h in a normal operation conditions.
 - Colors: White & Red
 - Index Protection: IP68.

RCL-08 | In-pavement runway centerline light - Airsafe

Order Code



Installation

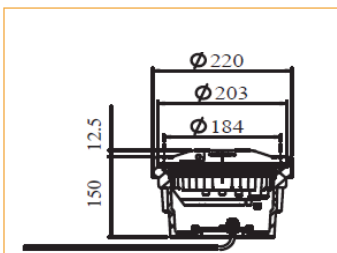


Figure 1
On 8" shallow base

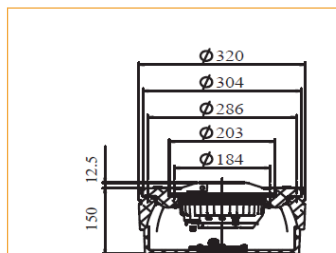


Figure 2
On 12" shallow base with
12" - 8" adapter ring

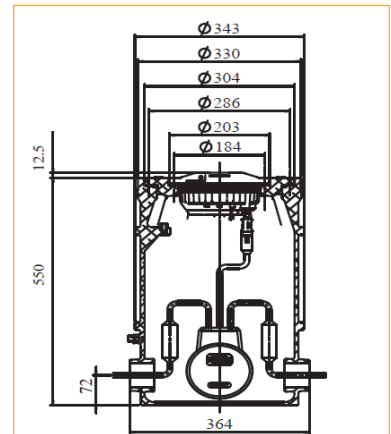
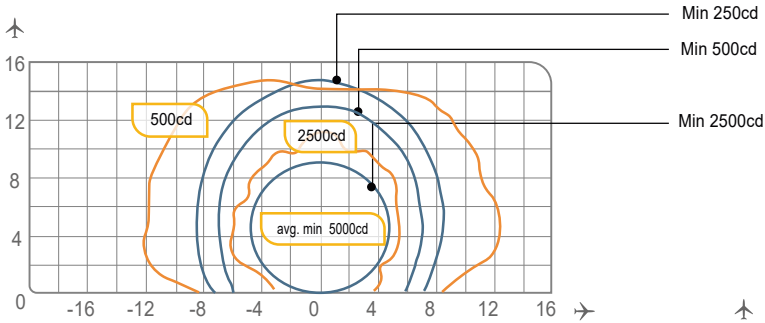


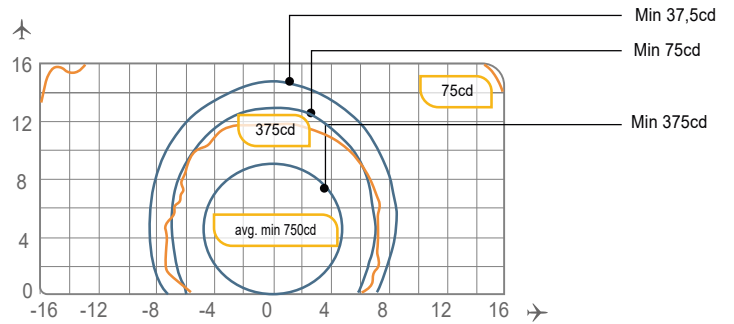
Figure 3
On 12" deep base with 12"/8"
adapter ring

RCL-08 | In-pavement runway centerline light - Airsafe

Photometry



RCL-08, ICAO Fig. A2-7, White

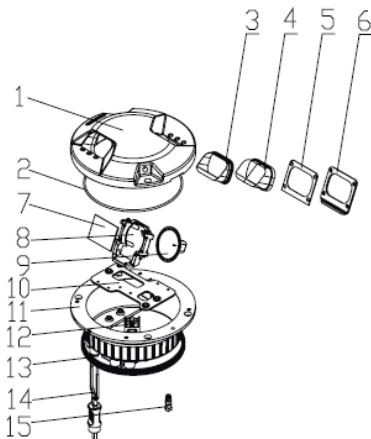


RCL-08, ICAO Fig. A2-7, Red

Application		Main beam		Color	Required min. avg. cd.	Actual avg. cd.
		H	V			
RCL-08	ICAO Fig A2-7	±5°	0° a 9°	White	5.000	6.562
			/ 0,2° a 9°	Red	750	1.560
	ICAO Fig A2-6	±5°	1° a 10°	White	5.000	6.501
			0,2° a 4,7°	Red	750	1.572



Structure



- 1 Upper cover
- 2 Light body gasket
- 3 Prism gasket sleeve
- 4 Prism
- 5 Prism gasket
- 6 Prism pressing bracket
- 7 Filter
- 8 Lamp holder
- 9 Lamp
- 10 Mounting plate assy
- 11 Inner cover
- 12 Terminal block
- 13 Lighting fixture gasket
- 14 Plug
- 15 Valve

RCL-08 | In-pavement runway centerline light - Airsafe

Spare Parts

N°	Order No.	Description
2	43107	Prism gasket sleeve
3	31141	Prism
4	43307	Prism gasket
5	43208	Prism pressing bracket
6	31316-R	Filter-red
7	942133	Lamp holder
8	L64337	Lamp
10	41107	Light fixture gasket
11	41141	Light body gasket
13	941801	Valve
14	941801	Plug

Accessories

N°	Order No.	Description
1	SB-08	8" shallow base
2	SB-12	12" shallow base
3	DB-12	12" deep base
4	AR-12/08	12" - 8" adapter ring assy
5	951101	8" lamp holder
6	ITF-065-066	65W isolation transformer
7	ITF-150-066	150W isolation transformer
8	REC7	Secondary cable receptable style 7



Weight and Dimensions

	Base	8" shallow base
Packaging size	210x210x130mm ³	240x240x180mm ³
Weight	3,1 kg	6,0 kg