

## THW-12 | In-pavement runway threshold wing-bar light - Airsafe



### COMPLIANCE:

- ICAO Annex.14 Vol.1
- FAA AC 150/5345-46
- IEC-TS 61827
- EASA: CS-ADR-DSN
- STANAG 3316
- AENA PPT-010\_03-12

### BOARDING PASS

NAME OF PASSANGER

FROM:

TO:

DATE

FLIGHT  
GAES2020

GATE 23 SEAT 21B

GATE CLOSING 30 MINUTES BEFORE DEPARTURE

BOARDING PASS

### Uses

In-pavement runway threshold wing-bar light for airports CAT I, II & III, according to ICAO, Figure A2-4.

### Features

- 12" external diameter.
- Body casting manufactured on forged aluminum, with high strength and optimum mechanical performance.
- A patented prism design to guarantee an excellent optical performance and ensures high resistance to temperature and pressure changes.
- The upper cover is designed with a flat surface at the light beam exits to prevent the accumulation of water and ensure high luminous efficiency.
- Bulb fixing design based on suspension mounting to effectively extend bulb's lifetime
- Use of standard halogen reflector lamps.
- No adjustments required after lamp or another optical component replacement.
- High precision machining of parts and components to guarantee the quality and dimensions of each piece.
- Stainless steel hardware to grant the waterproof and corrosion resistance.
- Multi-slip waterproof gasket to ensure an appropriate seal with the base.
- Interchangeable components, usable in all lights of the range.

### Specifications

- Power: 2.8A ~ 6.6 A.
- Lamp: 3x105W/6.6A Halogen lamp with reflector
- Lamp average life: More than 1.500h at maximum brightness and more than 3.000h in a normal operation conditions.
- Color: Green
- Index Protection: IP68.

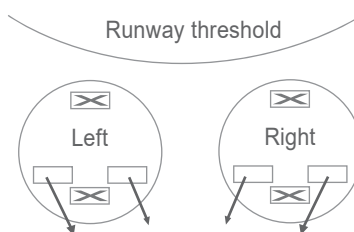
## THW-12 | In-pavement runway threshold wing-bar light - Airsafe

### Order Code

THW-12 - X - 315 - G

Type *THW-12 = 12" in-pavement runway  
threshold wing-bar light*

*L = Left toe-in  
R = Right toe-in*

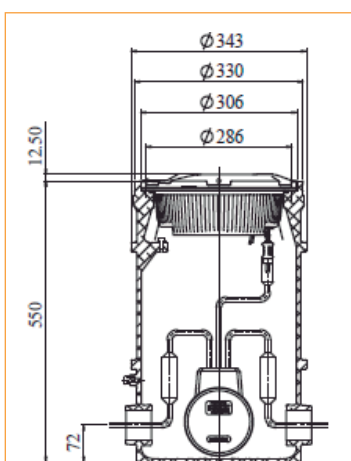


Beam direction

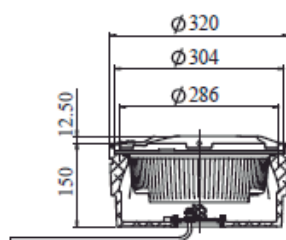
Power *315 = 3x105W*

Beam color *G = Green*

### Installation



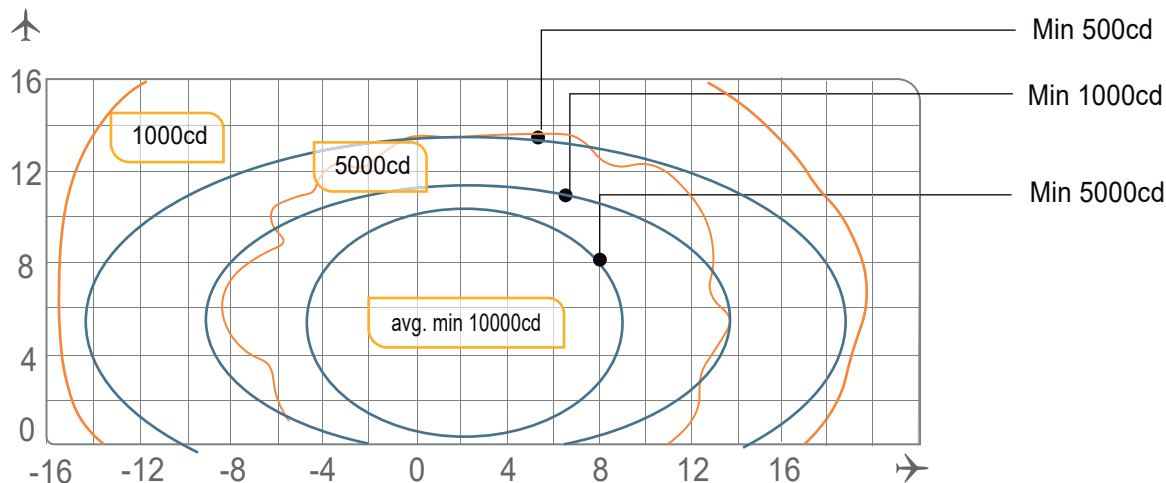
**Figure 1**  
*On 12" deep base*



**Figure 2**  
*On 12" shallow base*

## THW-12 | In-pavement runway threshold wing-bar light - Airsafe

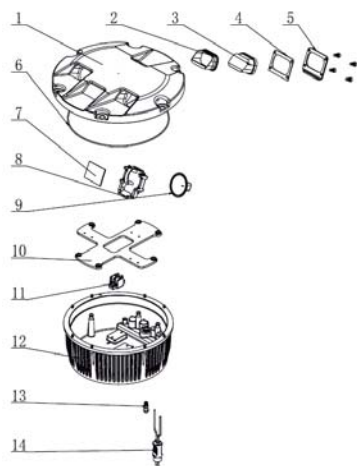
### Photometry



THW-12, ICAO Fig. A2-4, Green

| Application |               | Main beam                            |                            | Color | Required min. avg. cd. | Actual avg. cd. |
|-------------|---------------|--------------------------------------|----------------------------|-------|------------------------|-----------------|
|             |               | H                                    | V                          |       |                        |                 |
| THW-12      | ICAO Fig A2-4 | $\pm 7^\circ$<br>(Toe-in $2^\circ$ ) | $0,5^\circ$ a $10,5^\circ$ | Green | 10.000                 | 12.586          |

### Structure



- 1 Upper cover
- 2 Prism gasket sleeve
- 3 Prism
- 4 Prism gasket
- 5 Prism pressing gasket
- 6 Light body gasket
- 7 Filter
- 8 Lamp holder
- 9 Lamp
- 10 Mounting plate
- 11 Terminal block
- 12 Inner cover
- 13 Valve
- 14 Plug

## THW-12 | In-pavement runway threshold wing-bar light - Airsafe

### Spare Parts

| N° | Order No. | Description                       |
|----|-----------|-----------------------------------|
| 2  | 43107     | Prism gasket sleeve               |
| 3  | 31141     | Prism                             |
| 4  | 43307     | Prism gasket                      |
| 5  | 43208     | Prism pressing bracket            |
| 6  | 41135     | Light body gasket                 |
| 7  | 31316-G   | Filter-green                      |
| 8  | 942133    | Lamp holder                       |
| 9  | L64339    | Halogen lamp 105W/6.6A            |
| 11 | 941201    | Terminal block                    |
| 13 | 941801    | Valve                             |
| 14 | HT70603   | Secondary cable connector style 6 |

### Accessories

| N° | Order No.   | Description                        |
|----|-------------|------------------------------------|
| 1  | SB-12       | 12" shallow base                   |
| 2  | DB-12       | 12" deep base                      |
| 3  | 41115       | 12" base o-ring gasket             |
| 4  | 51121       | 12" lamp holder                    |
| 5  | ITF-300-066 | 300W isolation transformer         |
| 6  | REC7        | Secondary cable receptacle style 7 |



### Weight and Dimensions

|                       | Base                       | 8" shallow base            |
|-----------------------|----------------------------|----------------------------|
| <b>Packaging size</b> | 330x330x150mm <sup>3</sup> | 340x340x190mm <sup>3</sup> |
| <b>Weight</b>         | 7,3 kg                     | 11,8 kg                    |