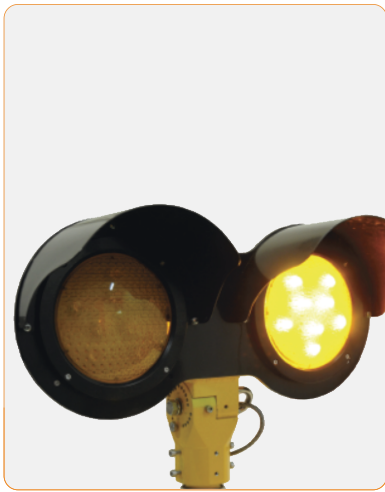


EUL-RG-LED | LED elevated runway guard light - Airsafe



COMPLIANCE:

- ICAO Annex.14, Vol I.
- FAA AC 150/5345-46
- IEC-TS 61827
- EASA CS-ADR-DSN.
- STANAG 3316



BOARDING TIME

BOARDING PASS

NAME OF PASSANGER	
FROM:	
TO:	
DATE	FLIGHT GAES2020
GATE 23	SEAT 21B

GATE CLOSSES 30 MINUTES BEFORE DEPARTURE
GAES 454843121451100


BOARDING PASS


Uses

LED elevated runway guard light for airports CAT I, II & III, according to ICAO Fig A2-25.

Features

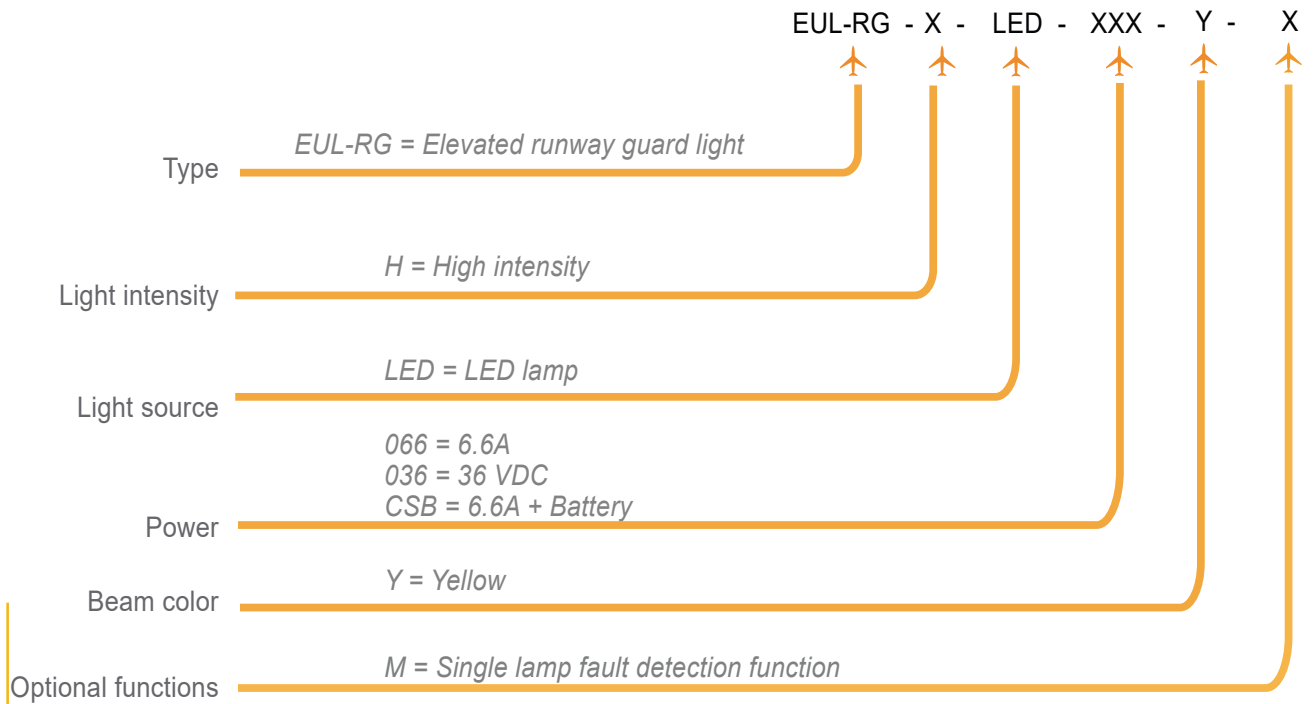
- Robust body built on high strength aluminum alloy, anti-corrosion treatment and excellent thermal dissipation.
- Reduced height to minimize the jet blast impact.
- Stainless steel hardware to grant the waterproof and corrosion resistance.
- Glass diffuser with high resistance to the temperature and abrasion.
- Long-life and robust design to guarantee the waterproof of the equipment over the years.
- Integrated electronic encapsulated in epoxy resin.
- Compatible with existing serial circuits without need of changing the isolation transformers.
- Regulated light output.
- Optional "Fail Open" monitoring device.
- Integrated surge protection.
- Efficient control of LEDs operating temperature, increasing the light life and avoiding color change.
- Saturated LED colors ensuring clear identification of the lights at all brightness levels and any viewing angle.
- The long-life of the equipments, with low maintenance and consumption, involve directly a reduction of operational costs.
- Optional anti-birds device available.

Specifications

- Power: 2.8A ~ 6.6A, according to FAA EB67.
- Average life: minimum 60.000h at maximum brightness and 100.000h in a normal operating conditions.
- Color: Yellow
- Consumption: * Table with consumptions at the end of this technical sheet, FP ≥ 0.95
- Index Protection: IP67

EUL-RG-LED | LED elevated runway guard light - Airsafe

Order Code



Installation

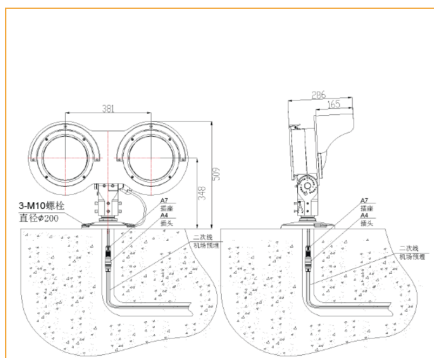


Figure 1
On flange

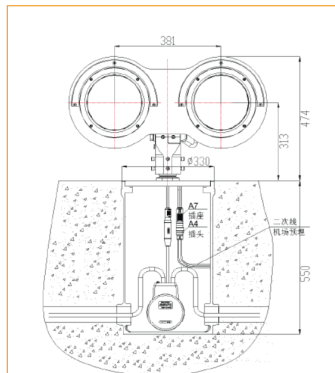


Figure 2
On 12" deep base

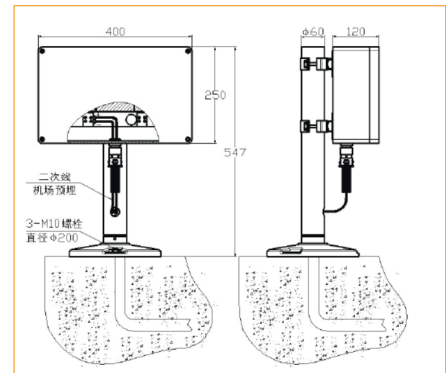
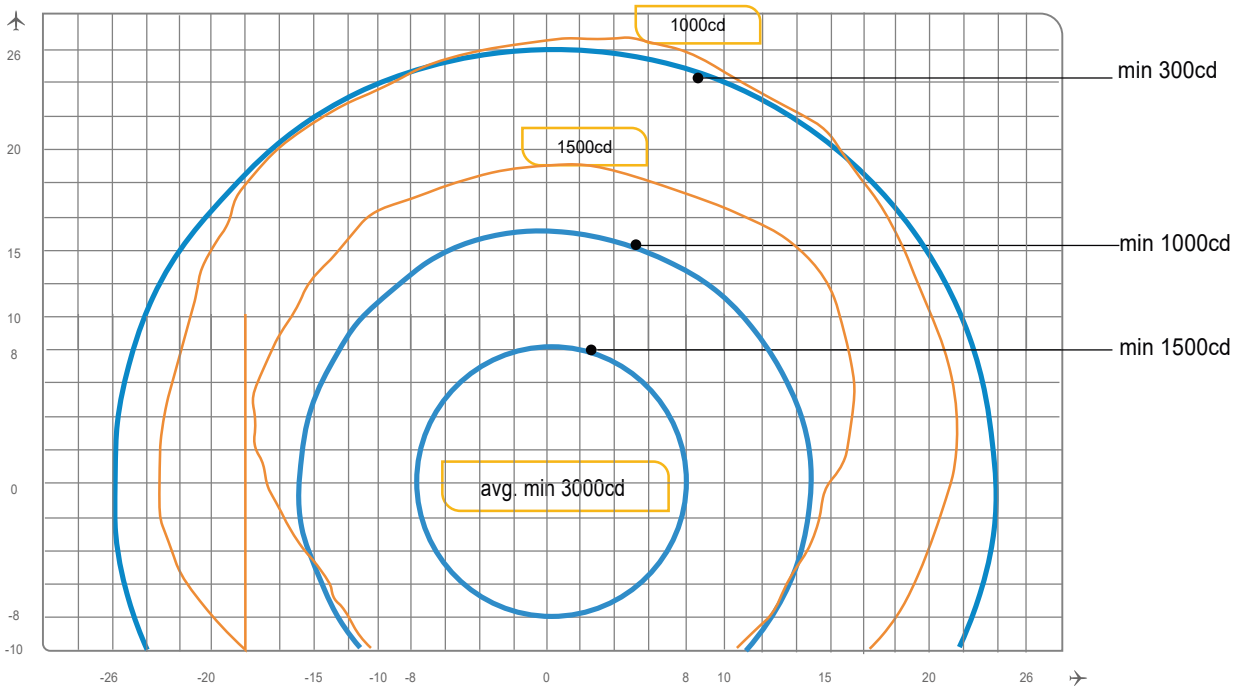


Figure 3
Battery unit box on flange

Photometry



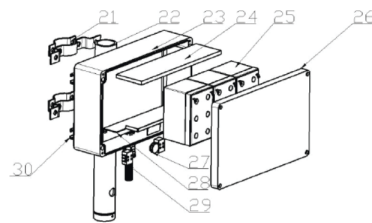
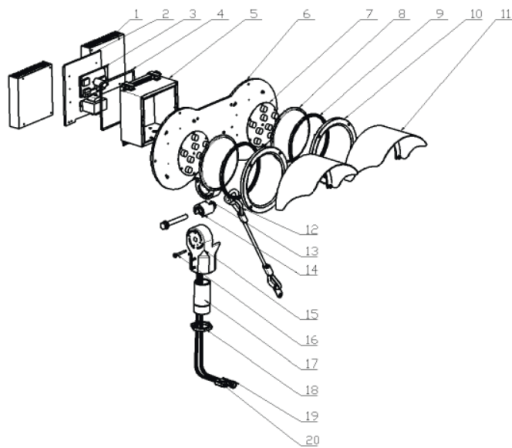
EUL - RG - LED, ICAO Fig A2-25, Yellow

Application		Main Beam		Color	Required min. avg. cd.	Actual avg. cd.
		H	V			
EUL-RG -LED	ICAO Fig. A2-25	± 8°	± 8°	Yellow	3.000	3.377

EUL-RG-LED | LED elevated runway guard light - Airsafe



Structure



- 1 Heating panel
- 2 Electric box cover plate
- 3 Control board
- 4 Electric box gasket
- 5 Electric box
- 6 Front panel
- 7 LED assembly
- 8 Optical cover
- 9 Optical cover gasket
- 10 Front cover
- 11 Visor cover
- 12 Chain
- 13 Connector
- 14 Connection column
- 15 Retainer
- 16 Adjusting pin
- 17 Flange
- 18 Nut
- 19 Style 7 plug
- 20 Style 6 socket
- 21 Locking hoop
- 22 Holder
- 23 Unit box
- 24 Insulating board
- 25 Battery
- 26 Unit box cover
- 27 Protective tube
- 28 Battery fixed plate
- 29 Terminal board
- 30 Hoop slot

Spare Parts

N°	Order No.	Description
3	945545	Control board
4	41122	Electric box gasket
7	979244-Y	LED assembly yellow
8	3110B	Optical cover
9	41178	Optical cover gasket
17	46362	Flange
19	70708	Style 7 double core socket
29	HT70603	Secondary cable connector style 6
22	24263	Holder
25	LC-CA1216	Battery
27	Fusible 6x30x15A	Protective tube
	79130	Transformer

EUL-RG-LED | LED elevated runway guard light - Airsafe

Accessories

N°	Order No.	Description
1	FL-10	Flange 10"
2	FL-12-X-G2	Flange 12"
3	ITF-045-066	45W isolation transformer
4	ITF-200-066	200W isolation transformer
5	REC 7	Secondary cble connector style 7
6	REC 4	Secondary cable connector style 4



Weight and Dimensions

- | | |
|-------------------------|---------------------------------|
| • Packaging size | 600 × 400 × 500 mm ³ |
| • Weight | 25,80 kg |

Consumptions table

Power supply	066	036	CSB		
IFT Power	45W	-	300W		
Power consumption	Primary	Secondary	50W	Primary	Secondary
	33VA	43VA		130VA	142VA