


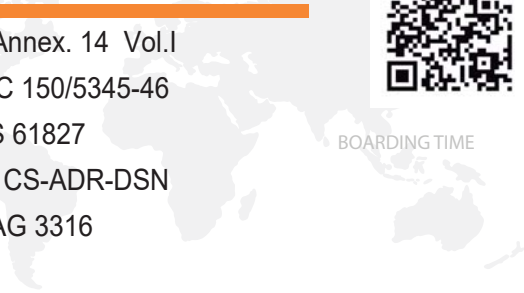


COMPLIANCE:

- ICAO Annex. 14 Vol.I
- FAA AC 150/5345-46
- IEC-TS 61827
- EASA: CS-ADR-DSN
- STANAG 3316



BOARDING TIME



BOARDING PASS

NAME OF PASSANGER

FROM:

TO:

DATE FLIGHT
 GAES2020

GATE SEAT
23 21B

GATE CLOSING 30 MINUTES BEFORE DEPARTURE

BOARDING PASS

Uses

LED aircraft stand manoeuvring guidance stop light for airports CAT I, II & III, according to ICAO Figures A2-12 & A2-13.

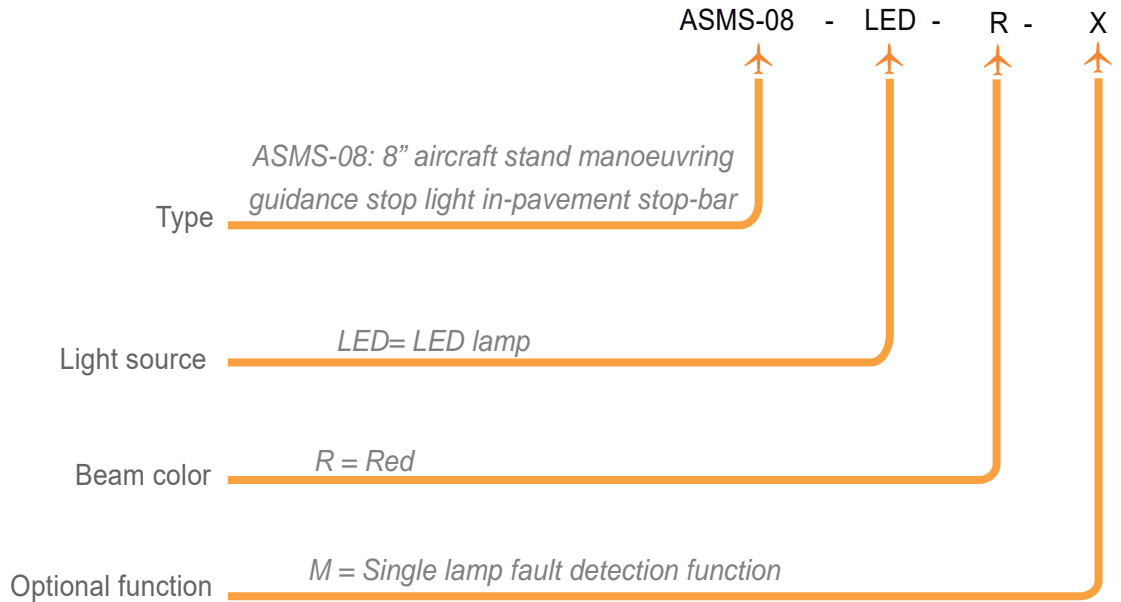
Features

- 8" external diameter, with upper and lower cover manufactured on high strength forged aluminum, and only 6mm of profile over pavement.
- Stainless steel hardware.
- Uni-directional and bi-directional configuration.
- Surface treatment to prevent the wear and increase the corrosion resistance, which makes it especially resistant to dust and water.
- Smooth surface without sharpened edges to avoid damages at the aircraft tyres.
- Regulation according to FAA EB67E equivalent to a halogen lamp.
- Integrated surge protection.
- Efficient control of LEDs operating temperature, increasing the light life and avoid color change.
- High features optical design.
- Compatible with existing circuits of visual aids.

Specifications

- Power: 2.8A ~ 6.6A, according to FAA EB67D.
- Average life: minimum 60.000h at maximum brightness and 100.000h in a normal operating conditions.
- Color: Red
- Consumption: 8VA; FP >0,95
- Index Protection: IP68.
- Installation with 15W isolation transformer

Order Code



Installation

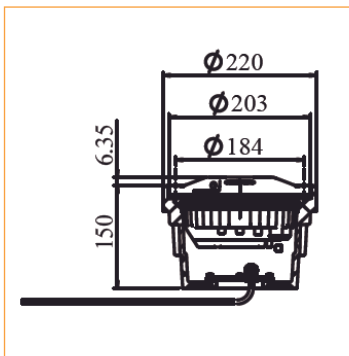


Figure 1
On 8" shallow base

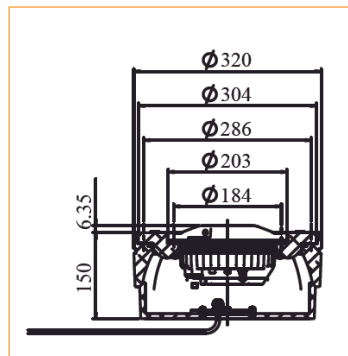


Figure 2
On 12" shallow base with
12"/8" adapter ring

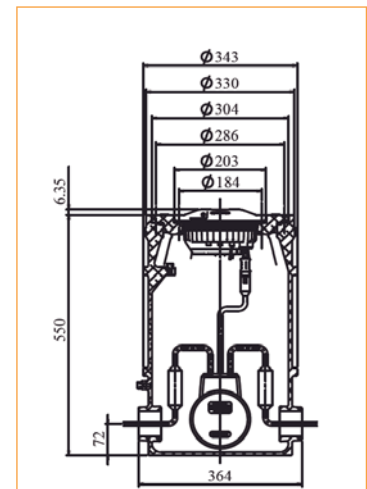
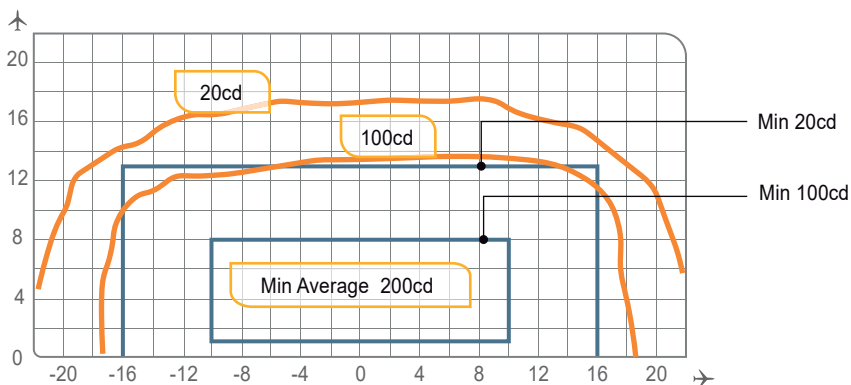


Figure 3
On 12" deep base with
12"/8" adapter ring

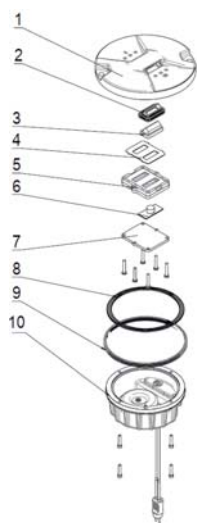
Photometry



ASMS-08-LED, ICAO Figura A2-12, Red

| Application | | Main beam | | Color | Required miin. avg. cd. | Actual avg. cd. |
|-------------|----------------|-----------|---------|-------|-------------------------|-----------------|
| | | H | V | | | |
| ASMS-08-LED | ICAO Fig.A2-12 | ±10° | 1° a 8° | Red | 200 | 271 |
| | ICAO Fig.A2-13 | ±3,5° | 1° a 8° | Red | 200 | 293 |

Structure



- 1 Upper cover
- 2 Prism gasket sleeve
- 3 Prism
- 4 Prism gasket
- 5 Prism pressing bracket
- 6 LED lamp assy
- 7 Cooling plate
- 8 Light body gasket
- 9 Lighting fixture gasket
- 10 Inner cover assy

Spare Parts

| N° | Order No. | Description |
|----|-----------|------------------------|
| 2 | 43111 | Prism gasket sleeve |
| 3 | 31151 | Prism |
| 4 | 43313 | Prism gasket |
| 5 | 4321A | Prism pressing bracket |
| 6 | 979223-R | LED lamp assy 2P-0 Red |
| 7 | 41141 | Light body gasket |
| 8 | 41107 | Light fixture gasket |

Accessories

| N° | Order No. | Description |
|----|-------------|-----------------------------------|
| 1 | SB-08 | 8" shallow base |
| 2 | SB-12 | 12" shallow base |
| 3 | DB-12 | 12" deep base |
| 4 | AR-12/08 | 12"/8" adapter ring |
| 5 | 951101 | 8" lamp handle |
| 6 | ITF-015-066 | 15W isolation transformer |
| 7 | REC7 | Secondary cable connector style 7 |



Weight and Dimensions

| | Base | 8" shallow base |
|-----------------------|----------------------------|----------------------------|
| Packaging size | 210x210x130mm ³ | 240x240x180mm ³ |
| Weight | 3,5 kg | 6,5 kg |