

AES-071-04-WH-F | Flat Final Approach and Take Off Area



Uses

Aiming point and FATO lights (Final Approach and Take Off Area)

Features



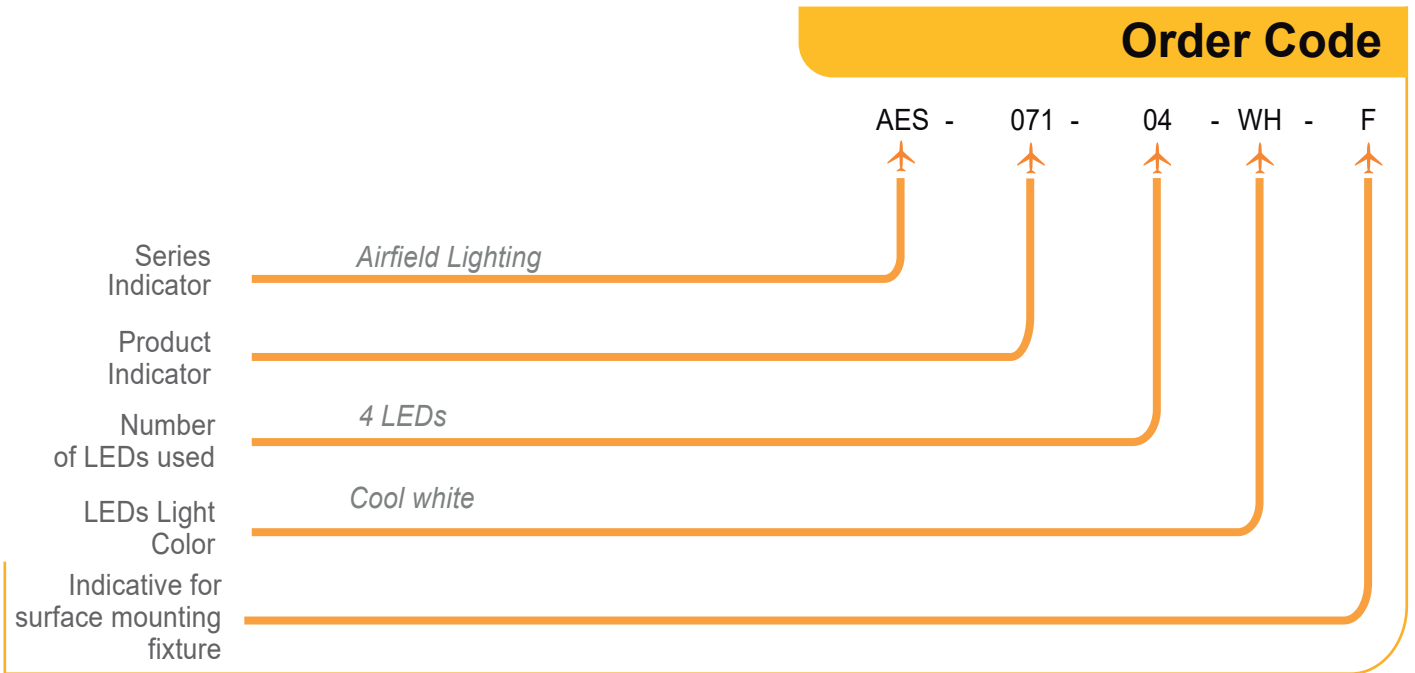
- Designed and built with simplicity and ease of maintenance in mind.
- High power LED technology.
- Lightweight, low-energy and environment friendly lighting fitting.
- Extensive use of aluminium alloys reduces fittings weight and eases handling in the field.
- Stainless steel fasteners.
- Light fixtures are provided with anti condensation valve and UV protected.



Technical Specifications

HOUSING MATERIAL	Powder-coated aluminium
DISPERSER	Hardened glass
DISPERSER FLANGE	Nickel-plated ring
CABLE GLAND	Nickel-plated brass
CASING COLOR	Standard: AVIATION YELLOW (RAL 1004)
POWER SUPPLY	48V DC from controller - dimmable: 100%, 30%, 10% 90 - 230V, 50/60Hz - non dimmable
POWER CONSUMPTION	9W

AES-071-04-WH-F | Flat Final Approach and Take Off Area



Environment

Temperature range: -55°C to +55°C

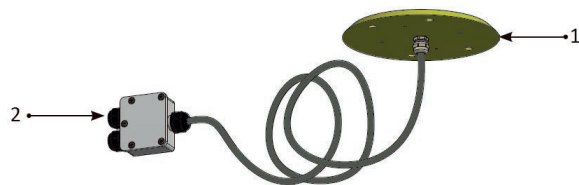
IP 68

Ka tested: Salt mist in accordance with IEC 60068-2-11 and IEC 60068-2-25



Electrical Connections

1. Light Fixture pre cabled
2. IP 68 Electrical Junction Box



Code: AES-071-04-WH-F

Code: AES-107-AX

Types of power supply:

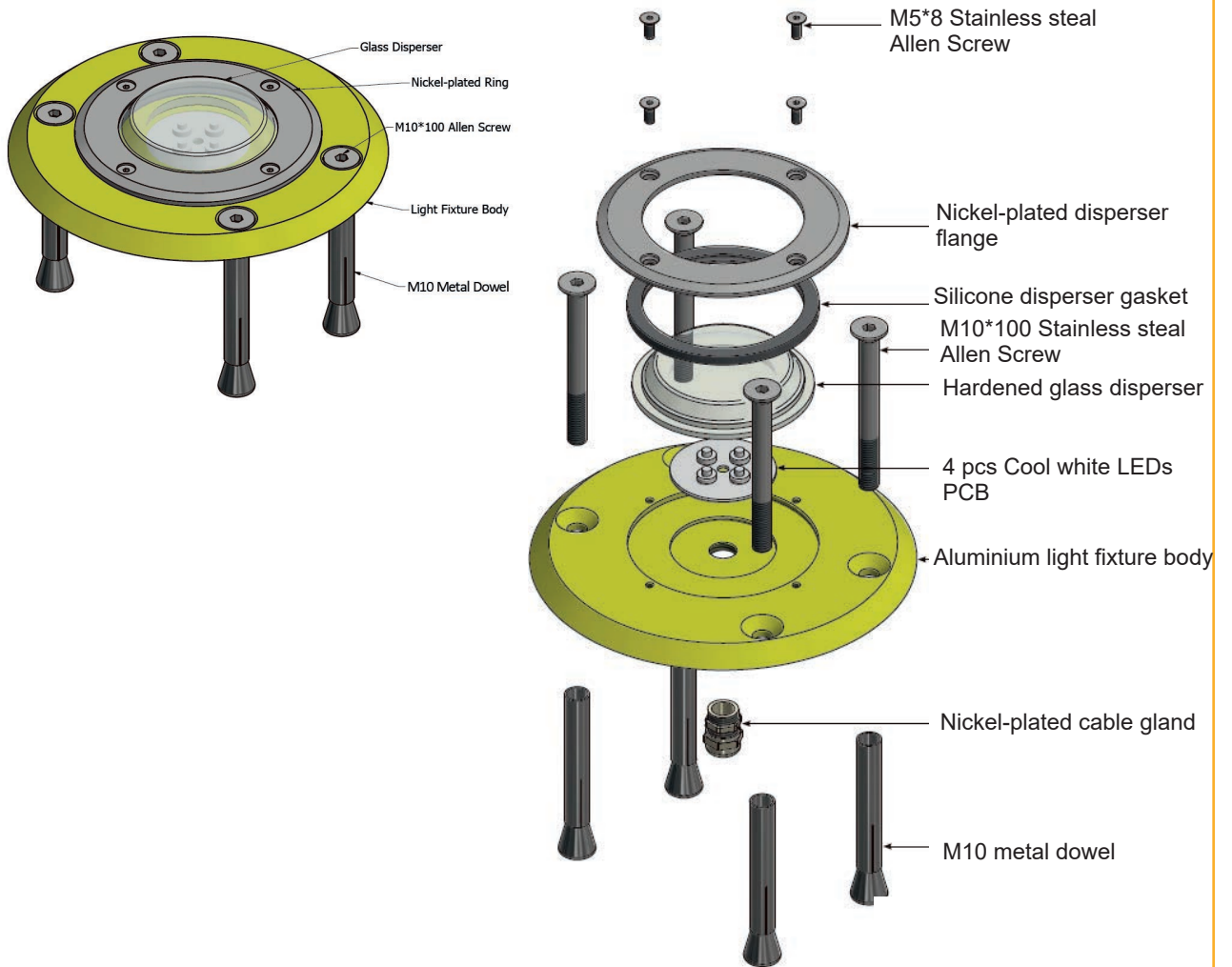
- 48V DC power supply from controller with 3 core cable
 - V+** (brown)
 - V-** (blue)
 - Dimming** (green/yellow)
- 230V AC directly from mains power supply
 - Live** (brown)
 - Neutral** (blue)
 - Ground** (green/yellow)

The light fixtures will be provided with sufficient length cable, which will be laid through a channel outside the heliport area, where it will be electrically connected using an IP65-rated junction box.

AES-071-04-WH-F | Flat Final Approach and Take Off Area

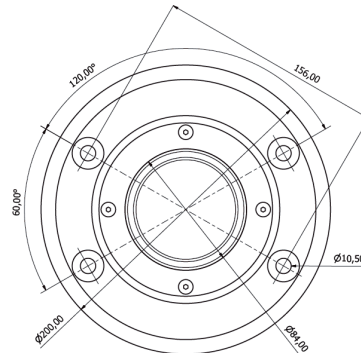
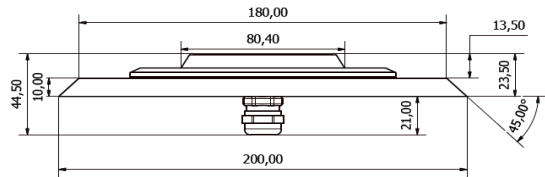


Structure



Weight and Dimensions

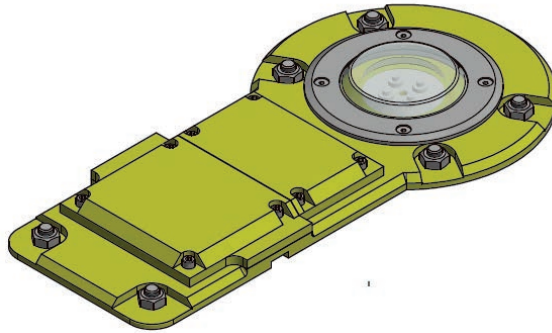
Diameter	200mm
Height	23.5mm without cable gland; 44.5mm with cable gland;
Weight	1.5 kg



Optional

Constructive variant for metal platforms

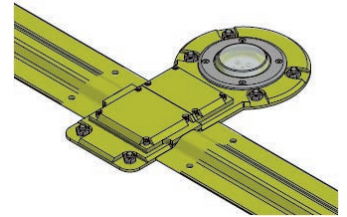
Product code AES - 071 - 04 - WH - FD



Power Supply:

- 48V DC power supply from controller with 3 core cable
- 230V AC directly from mains power supply

The power cable will be protected by an aluminium profile with a weight of 2.2Kg/m

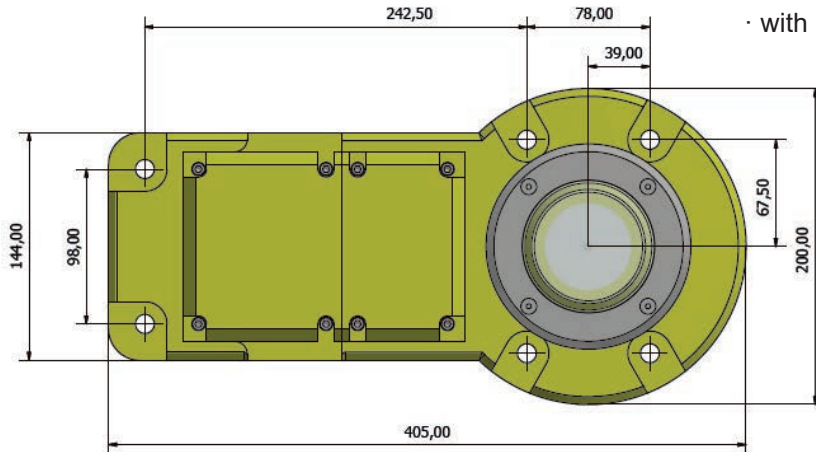


Mechanical Characteristics

Length / Width	405mm / 200mm
Height	23.5mm
Weight	2.5 kg

Installation of lighting fixture and cable protection:

- with M10 welded bolts on the metallic platform
- with M10 threaded holes in the metal platform

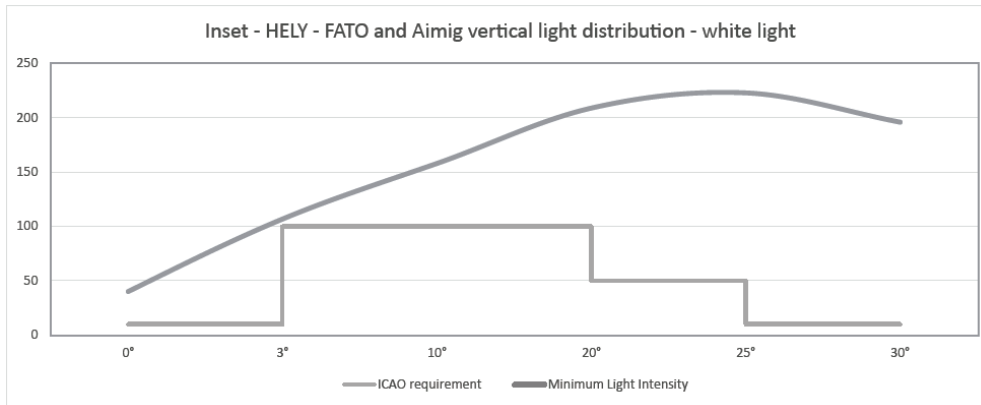


Photometric Characteristics

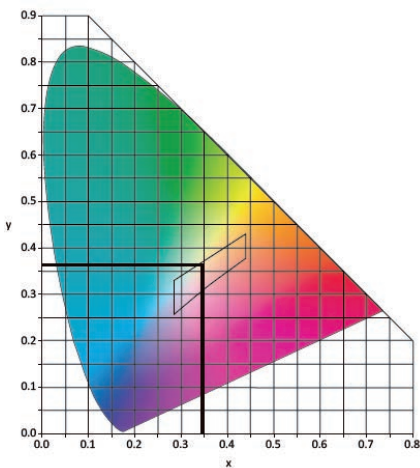
INTENSITY LEVEL	100%, 30%, 10% with controller in 48V DC
HORIZONTAL OUTPUT	360°
LIGHT COLOUR	White light

Vertical elevation angle	0°	3°	10°	20°	25°	30°
Required minimum intensity (cd)	10	100	100	100	50	10
Measured minimum intensity (cd)	40.3	104	158	209	223	196

The brightness intensity values complies with: ICAO requirements Annex 14 Vol. II Fig. 5-11/6



The light colour emitted by the light fixture is white, with the trichromatic coordinates:



x=0,347
y=0,370
z=0,283

The measured trichromatic coordinates correspond to colour range requirements in:
ICAO Annex 14 - Aerodromes Vol. I, fig. A1-1-1b
Colours for aeronautical ground lights (solid state lighting)