

AES-072-03-BL | Inset Taxiway light



COMPLIANCE:

- ICAO Annex 14, Vol I
- ICAO Annex 14, Vol II
- IEC TS 61827

BOARDING PASS

NAME OF PASSANGER

FROM:

TO:

DATE

FLIGHT GAES2020

GATE 23 SEAT 21B

GATE CLOSSES 30 MINUTES BEFORE DEPARTURE

GAES 454843121451100

BOARDING PASS



Uses

Taxiway lights for Heliports

Features



- Designed and built with simplicity and ease of maintenance in mind.
- High power LED technology in 100.000 hours estimated lifetime.
- Lightweight, low-energy and environment friendly lighting fitting.
- Extensive use of aluminium alloys reduces fittings weight and eases handling in the field.
- Stainless steel fasteners.
- Light fixtures are provided with anti condensation valve and UV protected.

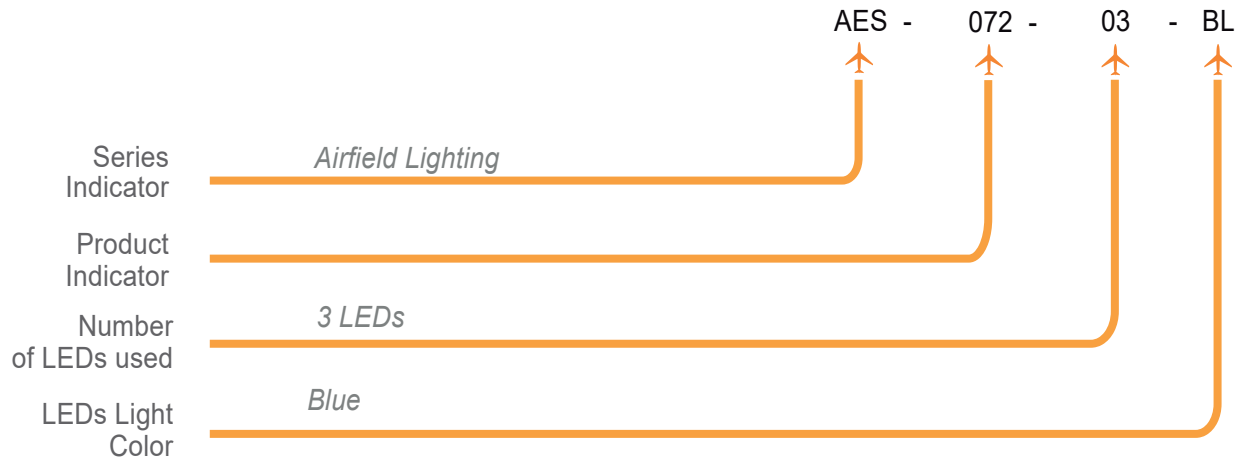


Technical Specifications

HOUSING MATERIAL	Powder-coated aluminium, RAL 1004 (aviation yellow)
DISPERSER	Hardened glass
DISPERSER FLANGE	Nickel-plated ring
CABLE GLAND	Nickel-plated brass
POWER SUPPLY	48V DC from controller - dimmable: 100%, 30%, 10% 0-230V, 50/60Hz - non dimmable 1.4A CC - dimmable: 100%, 30%, 10% (internal bypass +SPD)
POWER CONSUMPTION	6W

AES-072-03-BL | Inset Taxiway light

Order Code



Environment

Temperature range: -55°C to +55°C

IP 68

Ka tested: Salt mist in accordance with IEC 60068-2-11 and IEC 60068-2-25



Electrical Connections

1. Light Fixture pre cabled with 0,5m cable

2. IP 68 Electrical Junction Box

Types of power supply:

- 48V DC power supply from controller with 3 core cable

V+ (brown)

V- (blue)

Dimming (green/yellow)

- 230V AC directly from mains power supply

Live (brown)

Neutral (blue)

Ground (green/yellow)

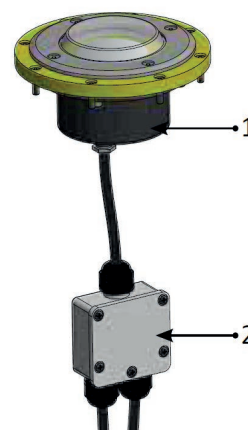
- 1.4A CC power supply from controller with 2 core cable

V+ (red mark)

V- (blue mark)

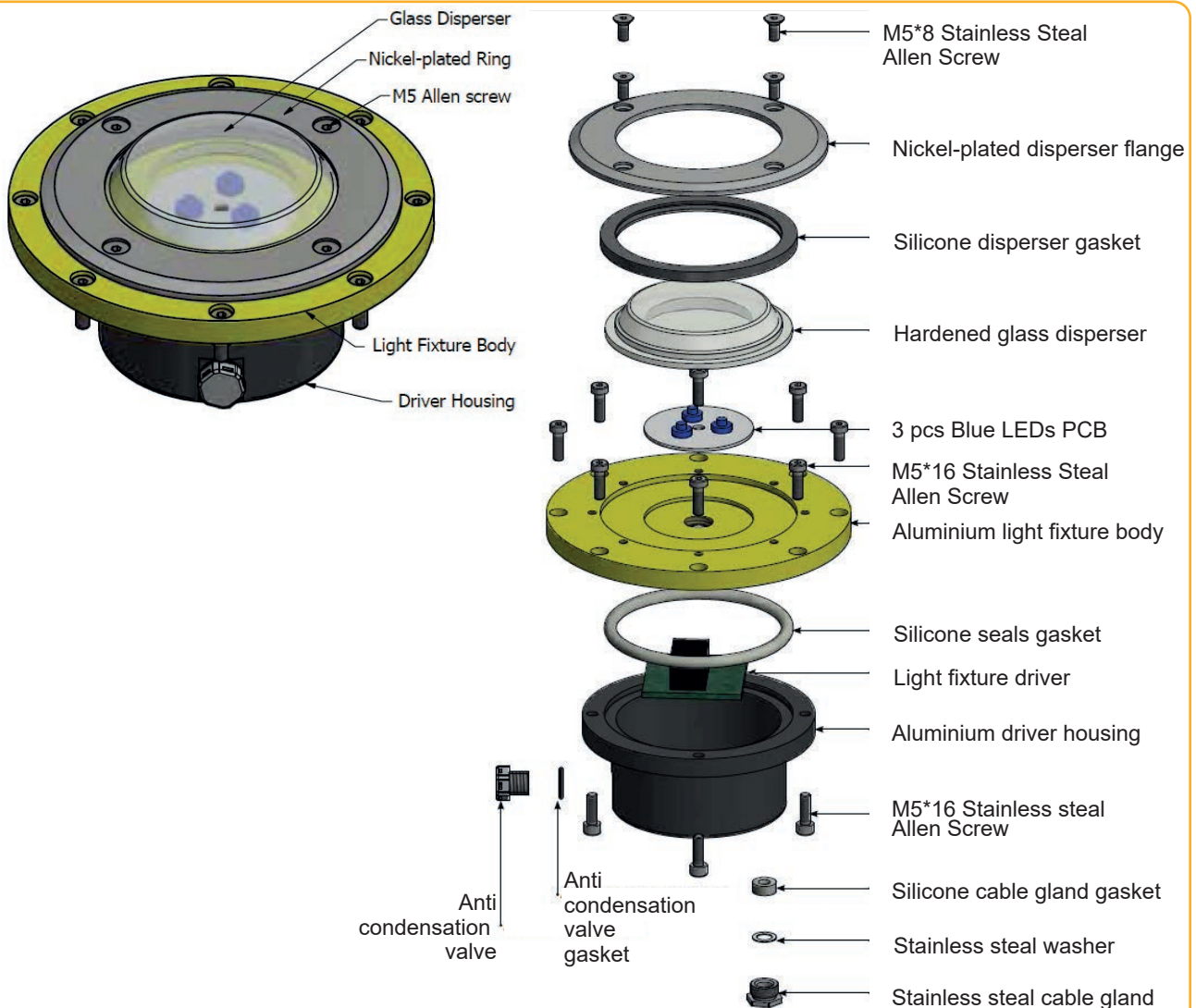
Code: AES-072-03-WH

Code: AES-107-AX

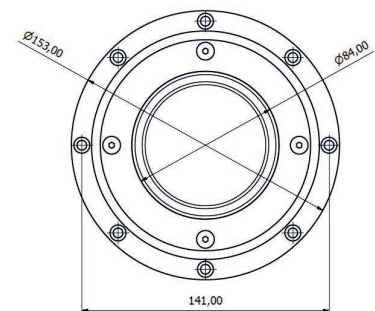
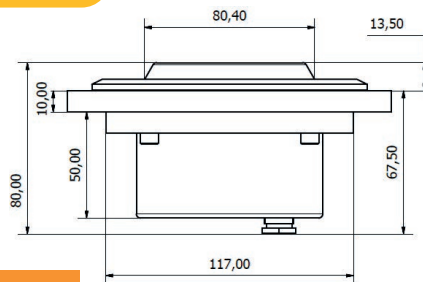


AES-072-03-BL | Inset Taxiway light

Structure



Weight and Dimensions



Diameter 153 mm

Total Height 80 mm

Weight 1.5 kg



AES-072-03-BL | Inset Taxiway light

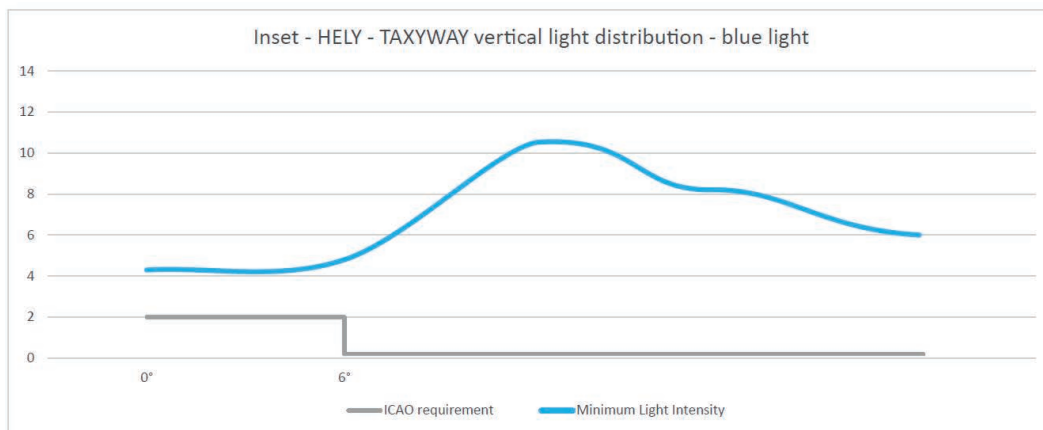


Photometric Characteristics

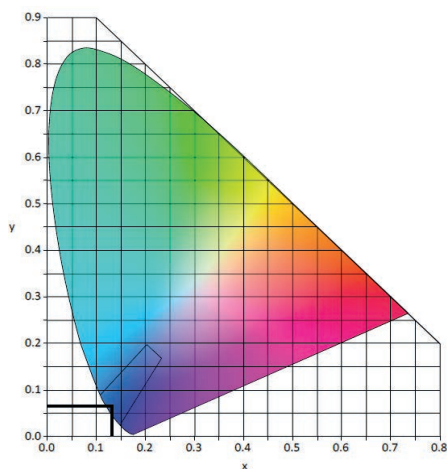
INTENSITY LEVEL	100%, 30%, 10% versions powered in 48VDC or 1.4A CC
HORIZONTAL OUTPUT	360°
LIGHT COLOUR	Blue light

Vertical elevation angle	0°-6°	>6°
Required minimum intensity (cd)	2	0.2
Measured minimum intensity (cd)	4.3	10.6

The brightness intensity values complies with: ICAO requirements Annex 14 Vol. I Cap. 5.3.18.8



The light colour emitted by the light fixture is blue, with the trichromatic coordinates:



$x=0,135$

$y=0,056$

$z=0,809$


The measured trichromatic coordinates correspond to colour range requirements in:

ICAO Annex 14 - Aerodromes Vol. I, fig. A1-1-1b

Colours for aeronautical ground lights (solid state lighting)

AES-072-03-BL | Inset Taxiway light

Spare Parts

Product Code	Description	Image
AES-104-AX	Standard Ø160mm Shallow Base	
AES-105-AX	Adapter ring for 8" Shallow Base	
AES-106-AX	Ø160mm Surface Mounted Base	
AES-107-AX	IP68 Electrical Junction Box	
AES-108-AX	Ø160mm Shallow Base Installation Jig	