

AES-073-03-GR | Inset TLOF light



COMPLIANCE:

- ICAO Annex 14, Vol I
- ICAO Annex 14, Vol II
- IEC TS 61827



BOARDING TIME

BOARDING PASS

NAME OF PASSANGER

FROM:

TO:

DATE FLIGHT
 GAES2020

GATE SEAT
23 21B

GATE CLOSSES 30 MINUTES BEFORE DEPARTURE

GAES 454843121451100

BOARDING PASS

Uses

TLOF lights (Touchdown and Take Off Area Perimeter) for Heliports.

Features

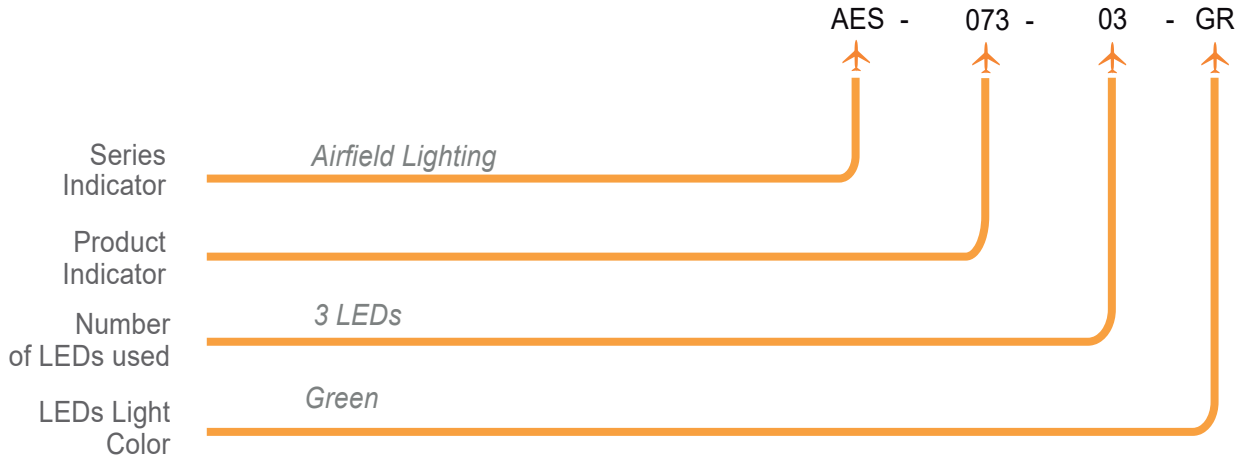
- Designed and built with simplicity and ease of maintenance in mind.
- High power LED technology in 100.000 hours estimated lifetime.
- Lightweight, low-energy and environment friendly lighting fitting.
- Extensive use of aluminium alloys reduces fittings weight and eases handling in the field.
- Stainless steel fasteners.
- Light fixtures are provided with anti condensation valve and UV protected.

Technical Specifications

HOUSING MATERIAL	Powder-coated aluminium, RAL 1004 (aviation yellow)
DISPERSER	Hardened glass
DISPERSER FLANGE	Nickel-plated ring
CABLE GLAND	Nickel-plated brass
POWER SUPPLY	48V DC from controller - dimmable: 100%, 30%, 10% 0-230V, 50/60Hz - non dimmable 1.4A CC - dimmable: 100%, 30%, 10% (internal bypass +SPD)
POWER CONSUMPTION	6W

AES-073-03-GR | Inset TLOF light

Order Code



Environment

Temperature range: -55°C to +55°C

IP 68

Ka tested: Salt mist in accordance with IEC 60068-2-11 and IEC 60068-2-25

Electrical Connections

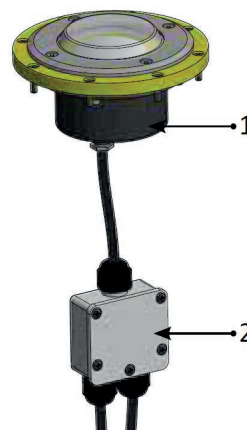
1. Light Fixture pre cabled with 0,5m cable
2. IP 68 Electrical Junction Box

Types of power supply:

- 48V DC power supply from controller with 3 core cable
 - V+** (brown)
 - V-** (blue)
 - Dimming** (green/yellow)
- 230V AC directly from mains power supply
 - Live** (brown)
 - Neutral** (blue)
 - Ground** (green/yellow)
- 1.4A CC power supply from controller with 2 core cable
 - V+** (red mark)
 - V-** (blue mark)

Code: AES-073-03-GR

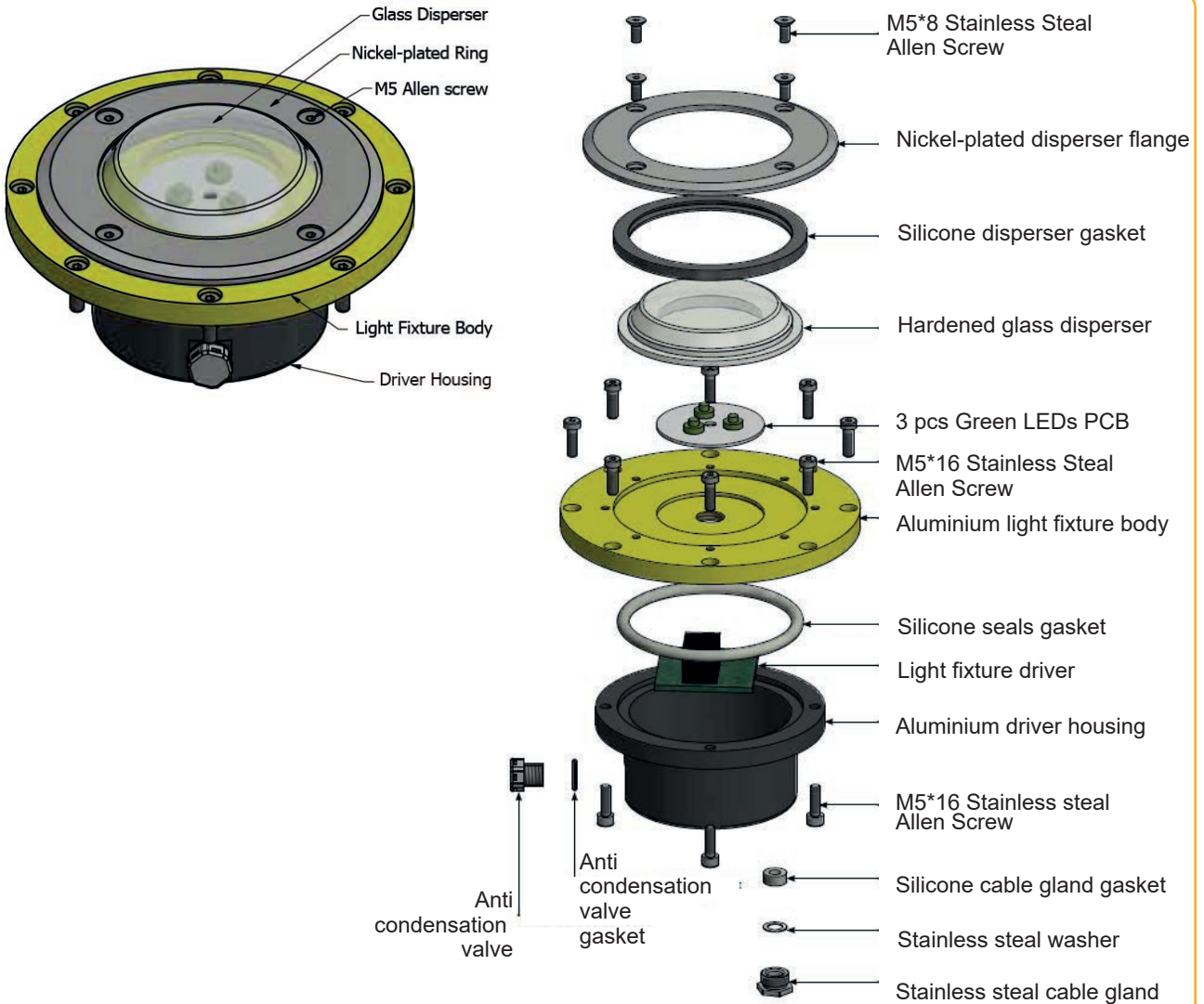
Code: AES-107-AX



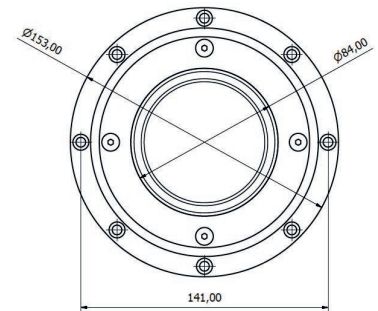
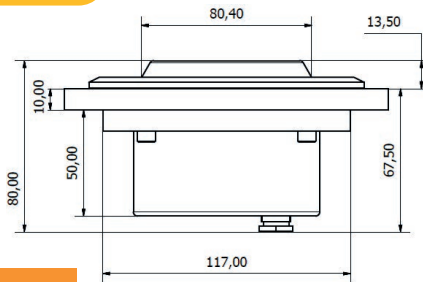
AES-073-03-GR | Inset TLOF light



Structure



Weight and Dimensions



Diameter	153 mm
Total Height	80 mm
Weight	1.5 kg



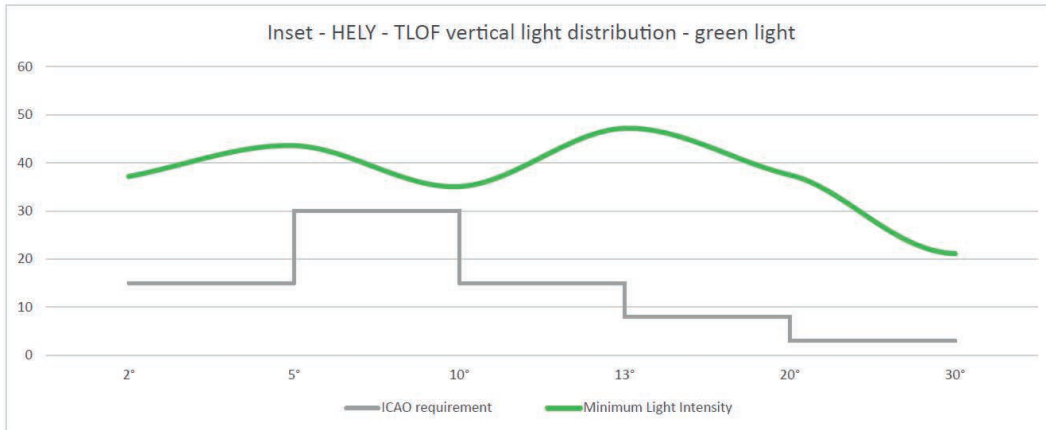
AES-073-03-GR | Inset TLOF light

Photometric Characteristics

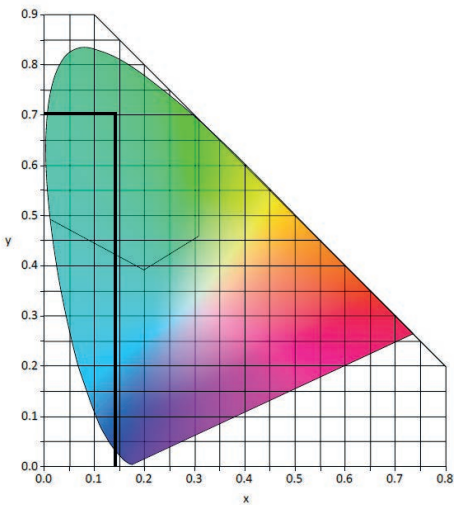
INTENSITY LEVEL	100%, 30%, 10% versions powered in 48VDC or 1.4A CC
HORIZONTAL OUTPUT	360°
LIGHT COLOUR	Green light

Vertical elevation angle	2°-5°	5°-10°	10°-13°	13°-20°	20°-90°
Required minimum intensity (cd)	15	30	15	8	3
Measured minimum intensity (cd)	37.2	43.6	35	47.2	37.5

The brightness intensity values complies with: ICAO requirements Annex 14 Vol. II Fig. 5-11/6




The light colour emitted by the light fixture is green, with the trichromatic coordinates:



x=0,145
y=0,701
z=0,154

The measured trichromatic coordinates correspond to colour range requirements in:
ICAO Annex 14 - Aerodromes Vol. I, fig. A1-1-1b
Colours for aeronautical ground lights (solid state lighting)

AES-073-03-GR | Inset TLOF light**Spare Parts**

Product Code	Description	Image
AES-104-AX	Standard Ø160mm Shallow Base	
AES-105-AX	Adapter ring for 8" Shallow Base	
AES-106-AX	Ø160mm Surface Mounted Base	
AES-107-AX	IP68 Electrical Junction Box	
AES-108-AX	Ø160mm Shallow Base Installation Jig	