

EOL-TE-LED

LED elevated taxiway edge light - Airsafe



Airsafe

Contact details:



E-mail: aes@aes-europe.com



Phone Number:
+00376 665572



Compliance

- ICAO Annex. 14, Vol. I
- FAA AC 150/5345-46
- IEC-TS 61827
- EASA: CS-ADR-DSN
- STANAG 3316
- AENA PPT-017_04-12

Uses

LED elevated taxiway edge light for airports CAT I, II & III, according to ICAO Art.5.3.18.8

Features

- Robust body built on high strength aluminum alloy, anti-corrosion treatment and excellent thermal dissipation.
- Reduced height to minimize the jet blast impact.
- Stainless steel hardware to grant the waterproof and corrosion resistance.
- Glass diffuser with high resistance to the temperature and abrasion.
- Long-life and robust design to guarantee the waterproof of the equipment over the years.
- Integrated electronic encapsulated in epoxy resin.
- Compatible with existing serial circuits without need of changing the isolation transformers.
- Regulated light output.
- Optional “Fail Open” monitoring device.
- Integrated surge protection.
- Efficient control of LEDs operating temperature, increasing the light life and avoiding color change.
- Saturated LED colors ensuring clear identification of the lights at all brightness levels and any viewing angle.
- The long-life of the equipments, with low maintenance and consumption, involve directly a reduction of operational costs.

Specifications

- Power: 2.8A ~ 6.6A, according to FAA EB67.
- Average life: minimum 60.000h at maximum brightness and 100.000h in a normal operating conditions.
- Color: Blue.
- Consumption: $\leq 4VA$, $FP \geq 0.95$.
- Index Protection: IP67.
- Installation for 15W isolation transformer.

Contact details:



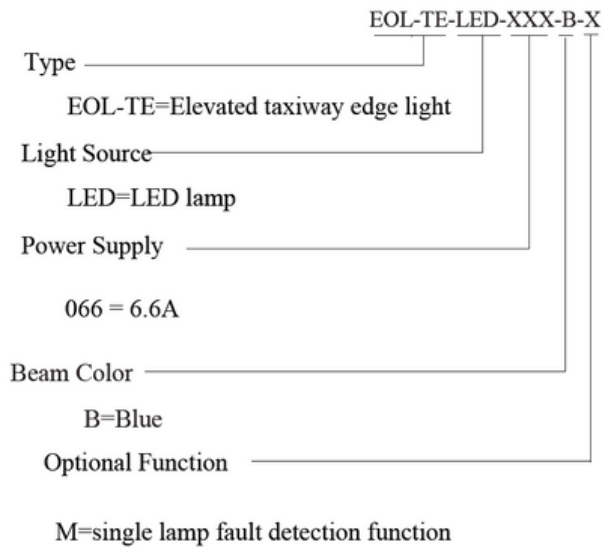
E-mail: aes@aes-europe.com



Phone Number:
+00376 665572



Order Code



Installation

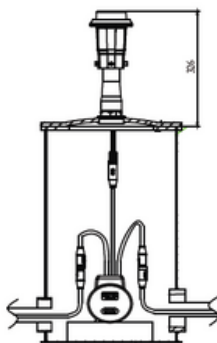
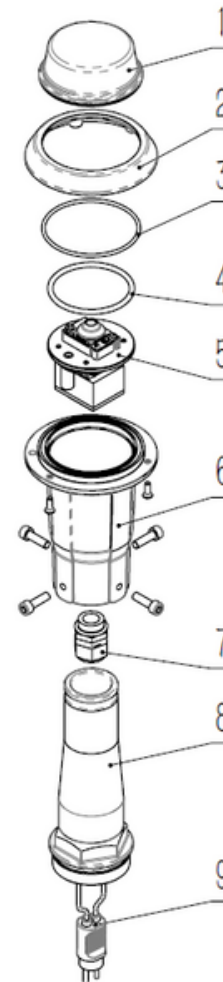


Fig 1. On 12" deep base.



Fig 2. Flange direct mount

Structure



1. Dome
2. Cover bracket
3. Sealing ring
4. Pressing ring
5. Light source assy with driver
6. Light body
7. Gland
8. Frangible pole
9. Plug

Contact details:



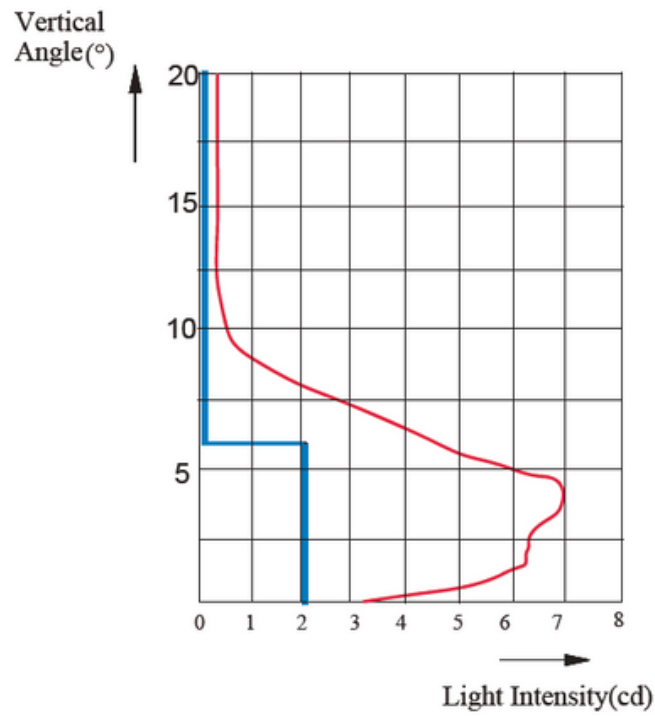
E-mail: aes@aes-europe.com



Phone Number:
+00376 665572



Photometry



EUL - TE - LED, ICAO Art.5.3.18.8, Blue

