

# EUL-RG-LED

**LED elevated runway guard light - Airsafe**



**Airsafe**

## Contact details:



E-mail: [aes@aes-europe.com](mailto:aes@aes-europe.com)



Phone Number:  
+00376 665572



## Compliance

- ICAO Annex. 14, Vol. I
- FAA AC 150/5345-28
- IEC-TS 61827
- EASA: CS-ADR-DSN
- STANAG 3316

## Uses

Elevated runway guard light for airports CAT I, II & III, according to ICAO Fig A2-25.

## Features

- Compact and lightweight structure with reduced wind exposed surface.
- Exclusive optical design based on glass diffuser with inner refractive prisms to avoid dirt deposit.
- Reduced height to minimize the jet blast impact.
- Robust body built on high strength aluminum alloy, anti-corrosion treatment and excellent thermal dissipation.
- Stainless steel hardware to grant the waterproof and corrosion resistance.
- Glass diffuser fixed to the main body through retaining ring and waterproof gland without additional sealants.
- International standard PK30D prefocus bulb.
- No adjustments required after lamp or another optical component replacement.
- No tools required to access to the lamp housing, to provide an easy maintenance.
- Interchangeable components, usable in all types of elevated uni-directional lights.
- Alternately lights of 45-50 flashes per minute.
- Visor anti-glare.

## Specifications

- Power: 2.8A ~ 6.6A.
- Prefocused halogen lamp: 2x100W / 6.6A Pk30d.
- Lamp average life: More than 1.500h at maximum brightness and more than 3.000h in a normal operation conditions.
- Color: Yellow.
- Consumption: ≤ 36VA, Power factor: ≥0.9.
- Index Protection: IP67.

## Contact details:



E-mail: [aes@aes-europe.com](mailto:aes@aes-europe.com)



Phone Number:  
+00376 665572



## Order Code

**EUL-RG-X-LED-XXX-Y-X**

TYPE \_\_\_\_\_  
EUL-RG = Elevated runway guard light

Intensity \_\_\_\_\_  
H = High intensity

Light source \_\_\_\_\_  
LED = LED Source

Power supply \_\_\_\_\_  
066 = 6.6 A  
036 = 36 VDC  
CSB = 6.6 A + Battery

Color \_\_\_\_\_  
Y = Yellow

Optional \_\_\_\_\_  
M = Single light fault detection function

## Installation

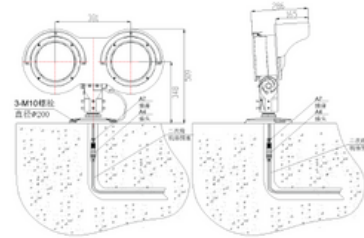


Fig 1. On flange

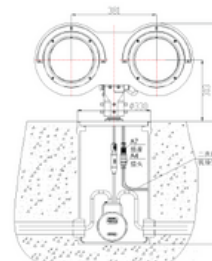


Fig 2. On 12" deep base

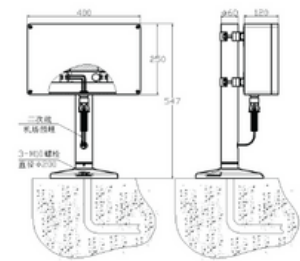
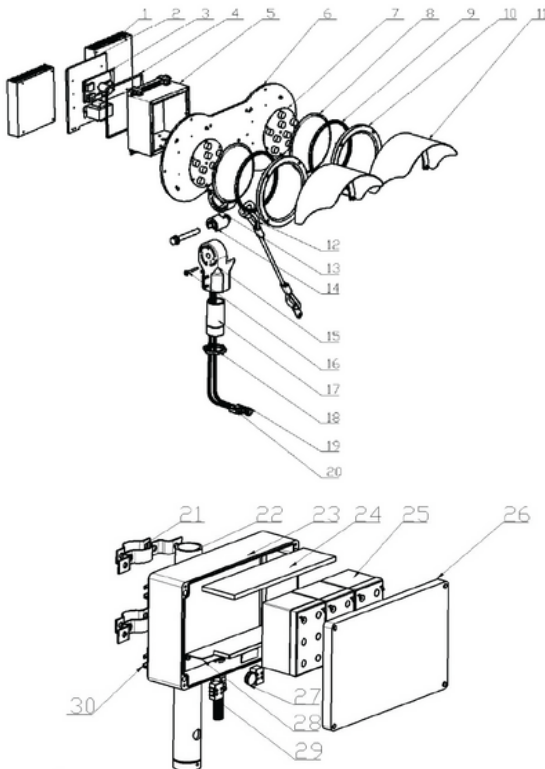


Fig 3. Battery unit box on flange

## Structure



- |                             |                         |
|-----------------------------|-------------------------|
| 1. Heating panel            | 16. Adjusting pin       |
| 2. Electric box cover plate | 17. Flange              |
| 3. Control board            | 18. Nut                 |
| 4. Electric box gasket      | 19. Style 7 plug        |
| 5. Electric box             | 20. Style 6 socket      |
| 6. Front panel              | 21. Locking hoop        |
| 7. LED assembly             | 22. Holder              |
| 8. Optical cover            | 23. Unit box            |
| 9. Optical cover gasket     | 24. Insulating board    |
| 10. Front cover             | 25. Battery             |
| 11. Visor cover             | 26. Unit box cover      |
| 12. Chain                   | 27. Protective tube     |
| 13. Connector               | 28. Battery fixed plate |
| 14. Connection column       | 29. Terminal board      |
| 15. Retainer                | 30. Hoop slot           |

## Contact details:



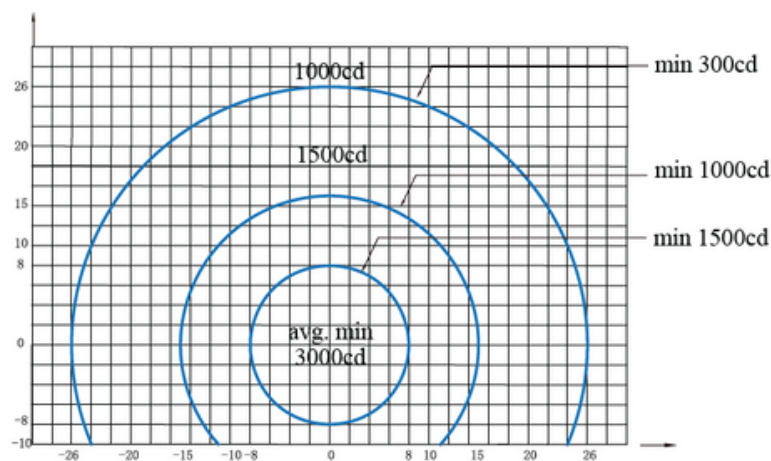
E-mail: [aes@aes-europe.com](mailto:aes@aes-europe.com)



Phone Number:  
+00376 665572



## Photometry



EUL-RG-LED, ICAO Fig A2-25, Yellow

## Contact details:



E-mail: [aes@aes-europe.com](mailto:aes@aes-europe.com)



Phone Number:  
+00376 665572